

**SSTR5 Antibody (C-term)**  
**Affinity Purified Rabbit Polyclonal Antibody (Pab)**  
**Catalog # AP19004b**

**Specification**

---

**SSTR5 Antibody (C-term) - Product Information**

Application	WB,E
Primary Accession	<a href="#">P35346</a>
Other Accession	<a href="#">NP_001044.1</a>
Reactivity	Human
Host	Rabbit
Clonality	Polyclonal
Isotype	Rabbit IgG
Calculated MW	39202
Antigen Region	311-339

**SSTR5 Antibody (C-term) - Additional Information**

**Gene ID** 6755

**Other Names**

Somatostatin receptor type 5, SS-5-R, SS5-R, SS5R, SSTR5

**Target/Specificity**

This SSTR5 antibody is generated from rabbits immunized with a KLH conjugated synthetic peptide between 311-339 amino acids from the C-terminal region of human SSTR5.

**Dilution**

WB~~1:1000

**Format**

Purified polyclonal antibody supplied in PBS with 0.09% (W/V) sodium azide. This antibody is purified through a protein A column, followed by peptide affinity purification.

**Storage**

Maintain refrigerated at 2-8°C for up to 2 weeks. For long term storage store at -20°C in small aliquots to prevent freeze-thaw cycles.

**Precautions**

SSTR5 Antibody (C-term) is for research use only and not for use in diagnostic or therapeutic procedures.

**SSTR5 Antibody (C-term) - Protein Information**

**Name** SSTR5

**Function** Receptor for somatostatin 28 and to a lesser extent for somatostatin-14. The activity of this receptor is mediated by G proteins which inhibit adenylyl cyclase. Increases cell growth

inhibition activity of SSTR2 following heterodimerization.

#### **Cellular Location**

Cell membrane; Multi-pass membrane protein.

#### **Tissue Location**

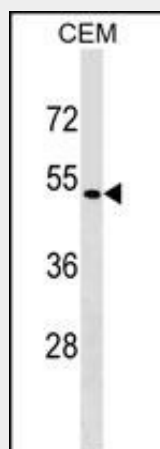
Adult pituitary gland, heart, small intestine, adrenal gland, cerebellum and fetal hypothalamus. No expression in fetal or adult kidney, liver, pancreas, uterus, spleen, lung, thyroid or ovary.

### **SSTR5 Antibody (C-term) - Protocols**

Provided below are standard protocols that you may find useful for product applications.

- [Western Blot](#)
- [Blocking Peptides](#)
- [Dot Blot](#)
- [Immunohistochemistry](#)
- [Immunofluorescence](#)
- [Immunoprecipitation](#)
- [Flow Cytometry](#)
- [Cell Culture](#)

### **SSTR5 Antibody (C-term) - Images**



SSTR5 Antibody (C-term) (Cat. #AP19004b) western blot analysis in CEM cell line lysates (35ug/lane). This demonstrates the SSTR5 antibody detected the SSTR5 protein (arrow).

### **SSTR5 Antibody (C-term) - Background**

Somatostatin and its related peptide cortistatin exert multiple biological actions on normal and tumoral tissue targets by interacting with somatostatin receptors (SSTRs). The protein encoded by this gene is one of the SSTRs, which is a multi-pass membrane protein and belongs to the G-protein coupled receptor 1 family. The activity of this receptor is mediated by G proteins which inhibit adenylyl cyclase, and different regions of this receptor molecule are required for the activation of different signaling pathways. A mutation in this gene results in somatostatin analog resistance. Alternatively spliced transcript variants have been identified in this gene.

**SSTR5 Antibody (C-term) - References**

Canzian, F., et al. Hum. Mol. Genet. 19(19):3873-3884(2010)  
Saus, E., et al. J Psychiatr Res 44(14):971-978(2010)  
Pinheiro, A.P., et al. Am. J. Med. Genet. B Neuropsychiatr. Genet. 153B (5), 1070-1080 (2010) :  
Duran-Prado, M., et al. J. Clin. Endocrinol. Metab. 95(5):2497-2502(2010)  
Pisarek, H., et al. Folia Histochem. Cytobiol. 48(1):142-147(2010)