

PAIP1 Antibody (N-term)
Affinity Purified Rabbit Polyclonal Antibody (Pab)
Catalog # AP19021a

Specification

PAIP1 Antibody (N-term) - Product Information

Application	WB,E
Primary Accession	O9H074
Other Accession	NP_006442.2
Reactivity	Human
Host	Rabbit
Clonality	Polyclonal
Isotype	Rabbit IgG
Calculated MW	53525
Antigen Region	23-49

PAIP1 Antibody (N-term) - Additional Information

Gene ID 10605

Other Names

Polyadenylate-binding protein-interacting protein 1, PABP-interacting protein 1, PAIP-1,
Poly(A)-binding protein-interacting protein 1, PAIP1

Target/Specificity

This PAIP1 antibody is generated from rabbits immunized with a KLH conjugated synthetic peptide between 23-49 amino acids from the N-terminal region of human PAIP1.

Dilution

WB~~1:1000

Format

Purified polyclonal antibody supplied in PBS with 0.09% (W/V) sodium azide. This antibody is purified through a protein A column, followed by peptide affinity purification.

Storage

Maintain refrigerated at 2-8°C for up to 2 weeks. For long term storage store at -20°C in small aliquots to prevent freeze-thaw cycles.

Precautions

PAIP1 Antibody (N-term) is for research use only and not for use in diagnostic or therapeutic procedures.

PAIP1 Antibody (N-term) - Protein Information

Name PAIP1 ([HGNC:16945](#))

Function Acts as a coactivator in the regulation of translation initiation of poly(A)-containing

mRNAs. Its stimulatory activity on translation is mediated via its action on PABPC1. Competes with PAIP2 for binding to PABPC1. Its association with EIF4A and PABPC1 may potentiate contacts between mRNA termini. May also be involved in translationally coupled mRNA turnover. Implicated with other RNA- binding proteins in the cytoplasmic deadenylation/translational and decay interplay of the FOS mRNA mediated by the major coding-region determinant of instability (mCRD) domain.

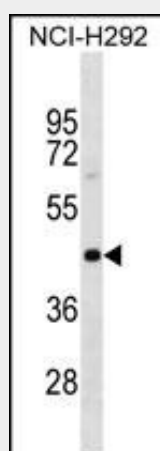
Cellular Location

Cytoplasm.

PAIP1 Antibody (N-term) - Protocols

Provided below are standard protocols that you may find useful for product applications.

- [Western Blot](#)
- [Blocking Peptides](#)
- [Dot Blot](#)
- [Immunohistochemistry](#)
- [Immunofluorescence](#)
- [Immunoprecipitation](#)
- [Flow Cytometry](#)
- [Cell Culture](#)

PAIP1 Antibody (N-term) - Images

PAIP1 Antibody (N-term) (Cat. #AP19021a) western blot analysis in NCI-H292 cell line lysates (35ug/lane). This demonstrates the PAIP1 antibody detected the PAIP1 protein (arrow).

PAIP1 Antibody (N-term) - Background

The protein encoded by this gene interacts with poly(A)-binding protein and with the cap-binding complex eIF4A. It is involved in translational initiation and protein biosynthesis. Overexpression of this gene in COS7 cells stimulates translation. Alternative splicing occurs at this locus and three transcript variants encoding three distinct isoforms have been identified.

PAIP1 Antibody (N-term) - References

Kanaan, A.S., et al. Acta Crystallogr. Sect. F Struct. Biol. Cryst. Commun. 65 (PT 10), 1060-1064

(2009) :

Martineau, Y., et al. Mol. Cell. Biol. 28(21):6658-6667(2008)

Fortna, A., et al. PLoS Biol. 2 (7), E207 (2004) :

Roy, G., et al. Mol. Cell. Biol. 22(11):3769-3782(2002)

Deo, R.C., et al. Proc. Natl. Acad. Sci. U.S.A. 98(8):4414-4419(2001)