

**RBMY1D Antibody (C-term)**  
**Affinity Purified Rabbit Polyclonal Antibody (Pab)**  
**Catalog # AP19033b****Specification**

---

**RBMY1D Antibody (C-term) - Product Information**

Application	WB,E
Primary Accession	<a href="#">POC7P1</a>
Other Accession	<a href="#">Q15415</a> , <a href="#">A6NEQ0</a> , <a href="#">PODJD4</a> , <a href="#">A6NDE4</a> , <a href="#">PODJD3</a> , <a href="#">NP_001006120.2</a>
Reactivity	Human
Host	Rabbit
Clonality	Polyclonal
Isotype	Rabbit IgG
Calculated MW	55775
Antigen Region	444-470

**RBMY1D Antibody (C-term) - Additional Information****Gene ID** 378949**Other Names**

RNA-binding motif protein, Y chromosome, family 1 member D, RBMY1D

**Target/Specificity**

This RBMY1D antibody is generated from rabbits immunized with a KLH conjugated synthetic peptide between 444-470 amino acids from the C-terminal region of human RBMY1D.

**Dilution**

WB~~1:1000

**Format**

Purified polyclonal antibody supplied in PBS with 0.09% (W/V) sodium azide. This antibody is purified through a protein A column, followed by peptide affinity purification.

**Storage**

Maintain refrigerated at 2-8°C for up to 2 weeks. For long term storage store at -20°C in small aliquots to prevent freeze-thaw cycles.

**Precautions**

RBMY1D Antibody (C-term) is for research use only and not for use in diagnostic or therapeutic procedures.

**RBMY1D Antibody (C-term) - Protein Information****Name** RBMY1D**Function** RNA-binding protein which may be involved in spermatogenesis. Required for sperm

development, possibly by participating in pre-mRNA splicing in the testis.

**Cellular Location**

Nucleus.

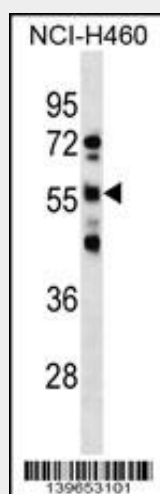
**Tissue Location**

Testis-specific.

**RBMY1D Antibody (C-term) - Protocols**

Provided below are standard protocols that you may find useful for product applications.

- [Western Blot](#)
- [Blocking Peptides](#)
- [Dot Blot](#)
- [Immunohistochemistry](#)
- [Immunofluorescence](#)
- [Immunoprecipitation](#)
- [Flow Cytometry](#)
- [Cell Culture](#)

**RBMY1D Antibody (C-term) - Images**

RBMY1D Antibody (C-term) (Cat. #AP19033b) western blot analysis in NCI-H460 cell line lysates (35ug/lane). This demonstrates the RBMY1D antibody detected the RBMY1D protein (arrow).

**RBMY1D Antibody (C-term) - Background**

This gene encodes a protein containing an RNA-binding motif in the N-terminus and four SRGY (serine, arginine, glycine, tyrosine) boxes in the C-terminus. Multiple copies of this gene are found in the AZFb azoospermia factor region of chromosome Y and the encoded protein is thought to be involved in spermatogenesis. Most copies of this locus are pseudogenes, although six highly similar copies have full-length ORFs and are considered functional. Four functional copies of this gene are found within inverted repeat IR2; two functional copies of this gene are found in palindrome P3, along with two copies of PTPN13-like, Y-linked. [provided by RefSeq].

**RBMY1D Antibody (C-term) - References**

Tsuei, D.J., et al. Oncogene 23(34):5815-5822(2004)  
Skaletsky, H., et al. Nature 423(6942):825-837(2003)  
Chai, N.N., et al. Genomics 49(2):283-289(1998)  
Prosser, J., et al. Mamm. Genome 7(11):835-842(1996)  
Ma, K., et al. Cell 75(7):1287-1295(1993)