

**OR2T35 Antibody (C-term)**  
**Affinity Purified Rabbit Polyclonal Antibody (Pab)**  
**Catalog # AP19052b****Specification**

---

**OR2T35 Antibody (C-term) - Product Information**

Application	WB,E
Primary Accession	<a href="#">Q8NGX2</a>
Other Accession	<a href="#">Q6IF00</a> , <a href="#">NP_001001827.1</a>
Reactivity	Human
Host	Rabbit
Clonality	Polyclonal
Isotype	Rabbit IgG
Calculated MW	36101
Antigen Region	296-323

**OR2T35 Antibody (C-term) - Additional Information****Gene ID** 403244**Other Names**

Olfactory receptor 2T35, Olfactory receptor OR1-66, OR2T35

**Target/Specificity**

This OR2T35 antibody is generated from rabbits immunized with a KLH conjugated synthetic peptide between 296-323 amino acids from the C-terminal region of human OR2T35.

**Dilution**

WB~~1:1000

**Format**

Purified polyclonal antibody supplied in PBS with 0.09% (W/V) sodium azide. This antibody is purified through a protein A column, followed by peptide affinity purification.

**Storage**

Maintain refrigerated at 2-8°C for up to 2 weeks. For long term storage store at -20°C in small aliquots to prevent freeze-thaw cycles.

**Precautions**

OR2T35 Antibody (C-term) is for research use only and not for use in diagnostic or therapeutic procedures.

**OR2T35 Antibody (C-term) - Protein Information****Name** OR2T35**Function** Odorant receptor.

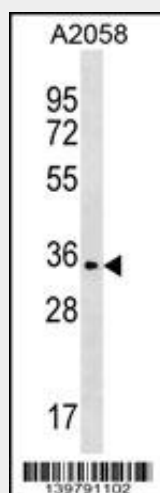
**Cellular Location**

Cell membrane; Multi-pass membrane protein.

**OR2T35 Antibody (C-term) - Protocols**

Provided below are standard protocols that you may find useful for product applications.

- [Western Blot](#)
- [Blocking Peptides](#)
- [Dot Blot](#)
- [Immunohistochemistry](#)
- [Immunofluorescence](#)
- [Immunoprecipitation](#)
- [Flow Cytometry](#)
- [Cell Culture](#)

**OR2T35 Antibody (C-term) - Images**

OR2T35 Antibody (C-term) (Cat. #AP19052b) western blot analysis in A2058 cell line lysates (35ug/lane). This demonstrates the OR2T35 antibody detected the OR2T35 protein (arrow).

**OR2T35 Antibody (C-term) - Background**

Olfactory receptors interact with odorant molecules in the nose, to initiate a neuronal response that triggers the perception of a smell. The olfactory receptor proteins are members of a large family of G-protein-coupled receptors (GPCR) arising from single coding-exon genes. Olfactory receptors share a 7-transmembrane domain structure with many neurotransmitter and hormone receptors and are responsible for the recognition and G protein-mediated transduction of odorant signals. The olfactory receptor gene family is the largest in the genome. The nomenclature assigned to the olfactory receptor genes and proteins for this organism is independent of other organisms.

**OR2T35 Antibody (C-term) - References**

Malnic, B., et al. Proc. Natl. Acad. Sci. U.S.A. 101(8):2584-2589(2004)