

**GKN1 Antibody (C-term)**  
**Affinity Purified Rabbit Polyclonal Antibody (Pab)**  
**Catalog # AP19065b**

**Specification**

---

**GKN1 Antibody (C-term) - Product Information**

Application	WB,E
Primary Accession	<a href="#">O9NS71</a>
Other Accession	<a href="#">NP_062563.3</a>
Reactivity	Human
Host	Rabbit
Clonality	Polyclonal
Isotype	Rabbit IgG
Calculated MW	20331
Antigen Region	124-150

**GKN1 Antibody (C-term) - Additional Information**

**Gene ID** 56287

**Other Names**

Gastroke-1, 18 kDa antrum mucosa protein, AMP-18, Protein CA11, GKN1, AMP18, CA11

**Target/Specificity**

This GKN1 antibody is generated from rabbits immunized with a KLH conjugated synthetic peptide between 124-150 amino acids from the C-terminal region of human GKN1.

**Dilution**

WB~~1:1000

**Format**

Purified polyclonal antibody supplied in PBS with 0.09% (W/V) sodium azide. This antibody is purified through a protein A column, followed by peptide affinity purification.

**Storage**

Maintain refrigerated at 2-8°C for up to 2 weeks. For long term storage store at -20°C in small aliquots to prevent freeze-thaw cycles.

**Precautions**

GKN1 Antibody (C-term) is for research use only and not for use in diagnostic or therapeutic procedures.

**GKN1 Antibody (C-term) - Protein Information**

**Name** GKN1

**Synonyms** AMP18, CA11

**Function** Has mitogenic activity and may be involved in maintaining the integrity of the gastric mucosal epithelium.

**Cellular Location**

Secreted. Cytoplasmic granule. Golgi apparatus. Note=Shows abundant granular cytoplasmic staining, with perinuclear accentuation suggestive of the Golgi apparatus.

**Tissue Location**

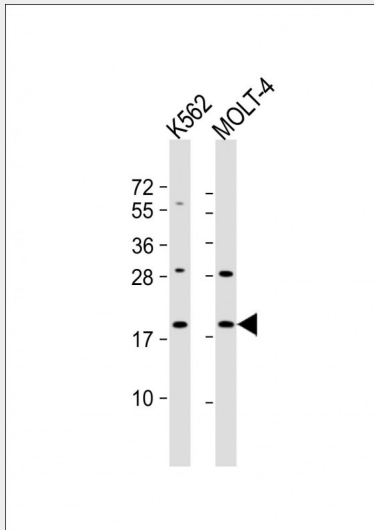
Expressed in stomach (at protein level). No expression is detected in cancer tissue or gastric cancer cell lines

**GKN1 Antibody (C-term) - Protocols**

Provided below are standard protocols that you may find useful for product applications.

- [Western Blot](#)
- [Blocking Peptides](#)
- [Dot Blot](#)
- [Immunohistochemistry](#)
- [Immunofluorescence](#)
- [Immunoprecipitation](#)
- [Flow Cytometry](#)
- [Cell Culture](#)

**GKN1 Antibody (C-term) - Images**



All lanes : Anti-GKN1 Antibody (C-term) at 1:1000 dilution Lane 1: K562 whole cell lysate Lane 2: MOLT-4 whole cell lysate Lysates/proteins at 20 µg per lane. Secondary Goat Anti-Rabbit IgG, (H+L), Peroxidase conjugated at 1/10000 dilution. Predicted band size : 22 kDa Blocking/Dilution buffer: 5% NFDM/TBST.

**GKN1 Antibody (C-term) - Background**

The protein encoded by this gene is found to be down-regulated in human gastric cancer tissue as compared to normal gastric mucosa.

**GKN1 Antibody (C-term) - References**

Rose, J.E., et al. Mol. Med. 16 (7-8), 247-253 (2010) :  
Broderick, P., et al. Cancer Res. 69(16):6633-6641(2009)  
Nardone, G., et al. Cancer Biol. Ther. 7(12):1890-1895(2008)  
Moss, S.F., et al. Clin. Cancer Res. 14(13):4161-4167(2008)  
Lamesch, P., et al. Genomics 89(3):307-315(2007)