

**TMPO Antibody (Center)**  
**Affinity Purified Rabbit Polyclonal Antibody (Pab)**  
**Catalog # AP19087C****Specification**

---

**TMPO Antibody (Center) - Product Information**

Application	WB,E
Primary Accession	<a href="#">P42167</a>
Other Accession	<a href="#">NP_001027454.1</a>
Reactivity	Human
Host	Rabbit
Clonality	Polyclonal
Isotype	Rabbit IgG
Calculated MW	50670
Antigen Region	243-269

**TMPO Antibody (Center) - Additional Information****Gene ID** 7112**Other Names**

Lamina-associated polypeptide 2, isoforms beta/gamma, Thymopoietin, isoforms beta/gamma, TP beta/gamma, Thymopoietin-related peptide isoforms beta/gamma, TPRP isoforms beta/gamma, Thymopoietin, TP, Splenin, Thymopentin, TP5, TMPO, LAP2

**Target/Specificity**

This TMPO antibody is generated from rabbits immunized with a KLH conjugated synthetic peptide between 243-269 amino acids from the Central region of human TMPO.

**Dilution**

WB~~1:1000

**Format**

Purified polyclonal antibody supplied in PBS with 0.09% (W/V) sodium azide. This antibody is purified through a protein A column, followed by peptide affinity purification.

**Storage**

Maintain refrigerated at 2-8°C for up to 2 weeks. For long term storage store at -20°C in small aliquots to prevent freeze-thaw cycles.

**Precautions**

TMPO Antibody (Center) is for research use only and not for use in diagnostic or therapeutic procedures.

**TMPO Antibody (Center) - Protein Information****Name** TMPO

### Synonyms LAP2

**Function** May help direct the assembly of the nuclear lamina and thereby help maintain the structural organization of the nuclear envelope. Possible receptor for attachment of lamin filaments to the inner nuclear membrane. May be involved in the control of initiation of DNA replication through its interaction with NAKAP95.

### Cellular Location

Nucleus inner membrane; Single-pass type II membrane protein. Note=Tightly associated with the nuclear lamina

### Tissue Location

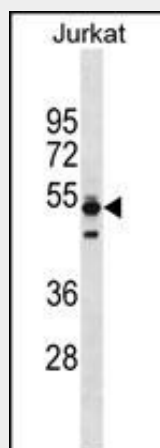
Expressed in many tissues. Most abundant in adult thymus and fetal liver

## TMPO Antibody (Center) - Protocols

Provided below are standard protocols that you may find useful for product applications.

- [Western Blot](#)
- [Blocking Peptides](#)
- [Dot Blot](#)
- [Immunohistochemistry](#)
- [Immunofluorescence](#)
- [Immunoprecipitation](#)
- [Flow Cytometry](#)
- [Cell Culture](#)

## TMPO Antibody (Center) - Images



TMPO Antibody (Center) (Cat. #AP19087c) western blot analysis in Jurkat cell line lysates (35ug/lane). This demonstrates the TMPO antibody detected the TMPO protein (arrow).

## TMPO Antibody (Center) - Background

The protein encoded by this gene resides in the nucleus and may play a role in the assembly of the nuclear lamina, and thus help maintain the structural organization of the nuclear envelope. It may function as a receptor for the attachment of lamin filaments to the inner nuclear membrane. Mutations in this gene are associated with dilated cardiomyopathy. Alternatively spliced

transcript variants encoding different isoforms have been noted for this gene.

#### **TMPO Antibody (Center) - References**

Bailey, S.D., et al. Diabetes Care 33(10):2250-2253(2010)  
Davila, S., et al. Genes Immun. 11(3):232-238(2010)  
Craig, D.W., et al. Diabet. Med. 26(11):1090-1098(2009)  
Talmud, P.J., et al. Am. J. Hum. Genet. 85(5):628-642(2009)  
Shaklai, S., et al. Eur. J. Cell Biol. 87(5):267-278(2008)