

**TRDC Antibody (Center)**  
**Affinity Purified Rabbit Polyclonal Antibody (Pab)**  
**Catalog # AP19091c****Specification**

---

**TRDC Antibody (Center) - Product Information**

Application	WB,E
Primary Accession	<a href="#">B7Z8K6</a>
Reactivity	Human
Host	Rabbit
Clonality	Polyclonal
Isotype	Rabbit IgG
Calculated MW	17085
Antigen Region	79-106

**TRDC Antibody (Center) - Additional Information****Other Names**

T-cell receptor delta chain C region, TRDC

**Target/Specificity**

This TRDC antibody is generated from rabbits immunized with a KLH conjugated synthetic peptide between 79-106 amino acids from the Central region of human TRDC.

**Dilution**

WB~~1:1000

**Format**

Purified polyclonal antibody supplied in PBS with 0.09% (W/V) sodium azide. This antibody is purified through a protein A column, followed by peptide affinity purification.

**Storage**

Maintain refrigerated at 2-8°C for up to 2 weeks. For long term storage store at -20°C in small aliquots to prevent freeze-thaw cycles.

**Precautions**

TRDC Antibody (Center) is for research use only and not for use in diagnostic or therapeutic procedures.

**TRDC Antibody (Center) - Protein Information**

**Name** TRDC {ECO:0000303|Ref.4}

**Function** Constant region of T cell receptor (TR) delta chain that participates in the antigen recognition (PubMed:[24600447](#)). Gamma-delta TRs recognize a variety of self and foreign non-peptide antigens frequently expressed at the epithelial boundaries between the host and external environment, including endogenous lipids presented by MH-like protein CD1D and phosphoantigens presented by butyrophilin-like molecule BTN3A1. Upon antigen recognition

induces rapid, innate-like immune responses involved in pathogen clearance and tissue repair (PubMed:[28920588](#), PubMed:[23348415](#)). Binding of gamma-delta TR complex to antigen triggers phosphorylation of immunoreceptor tyrosine-based activation motifs (ITAMs) in the CD3 chains by the LCK and FYN kinases, allowing the recruitment, phosphorylation, and activation of ZAP70 that facilitates phosphorylation of the scaffolding proteins LCP2 and LAT. This lead to the formation of a supramolecular signalosome that recruits the phospholipase PLCG1, resulting in calcium mobilization and ERK activation, ultimately leading to T cell expansion and differentiation into effector cells (PubMed:[25674089](#)). Gamma-delta TRs are produced through somatic rearrangement of a limited repertoire of variable (V), diversity (D), and joining (J) genes. The potential diversity of gamma-delta TRs is conferred by the unique ability to rearrange (D) genes in tandem and to utilize all three reading frames. The combinatorial diversity is considerably increased by the sequence exonuclease trimming and random nucleotide (N) region additions which occur during the V-(D)-J rearrangements (PubMed:[24387714](#)).

### Cellular Location

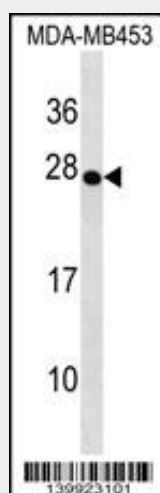
Cell membrane.

### TRDC Antibody (Center) - Protocols

Provided below are standard protocols that you may find useful for product applications.

- [Western Blot](#)
- [Blocking Peptides](#)
- [Dot Blot](#)
- [Immunohistochemistry](#)
- [Immunofluorescence](#)
- [Immunoprecipitation](#)
- [Flow Cytometry](#)
- [Cell Culture](#)

### TRDC Antibody (Center) - Images



TRDC Antibody (Center) (Cat. #AP19091c) western blot analysis in MDA-MB453 cell line lysates (35ug/lane). This demonstrates the TRDC antibody detected the TRDC protein (arrow).

### TRDC Antibody (Center) - Background

The function of this protein remains unknown.