

**WRNIP1 Antibody (N-term)**  
**Affinity Purified Rabbit Polyclonal Antibody (Pab)**  
**Catalog # AP19098a****Specification**

---

**WRNIP1 Antibody (N-term) - Product Information**

Application	WB,E
Primary Accession	<a href="#">O96S55</a>
Other Accession	<a href="#">O8CG07</a> , <a href="#">O91XU0</a> , <a href="#">NP_064520.2</a>
Reactivity	Human
Predicted	Mouse, Rat
Host	Rabbit
Clonality	Polyclonal
Isotype	Rabbit IgG
Calculated MW	72133
Antigen Region	1-30

**WRNIP1 Antibody (N-term) - Additional Information****Gene ID** 56897**Other Names**

ATPase WRNIP1, Werner helicase-interacting protein 1, WRNIP1 (<a href="http://www.genenames.org/cgi-bin/gene\_symbol\_report?hgnc\_id=20876" target="\_blank">HGNC:20876</a>)

**Target/Specificity**

This WRNIP1 antibody is generated from rabbits immunized with a KLH conjugated synthetic peptide between 1-30 amino acids from the N-terminal region of human WRNIP1.

**Dilution**

WB~~1:1000

**Format**

Purified polyclonal antibody supplied in PBS with 0.09% (W/V) sodium azide. This antibody is purified through a protein A column, followed by peptide affinity purification.

**Storage**

Maintain refrigerated at 2-8°C for up to 2 weeks. For long term storage store at -20°C in small aliquots to prevent freeze-thaw cycles.

**Precautions**

WRNIP1 Antibody (N-term) is for research use only and not for use in diagnostic or therapeutic procedures.

**WRNIP1 Antibody (N-term) - Protein Information****Name** WRNIP1 ([HGNC:20876](#))

**Function** Functions as a modulator of initiation or reinitiation events during DNA polymerase delta-mediated DNA synthesis. In the presence of ATP, stimulation of DNA polymerase delta-mediated DNA synthesis is decreased. Also plays a role in the innate immune defense against viruses. Stabilizes the RIGI dsRNA interaction and promotes RIGI 'Lys- 63'-linked polyubiquitination. In turn, RIGI transmits the signal through mitochondrial MAVS.

**Cellular Location**

Nucleus. Cytoplasm. Note=Colocalizes with WRN in granular structures in the nucleus.

**Tissue Location**

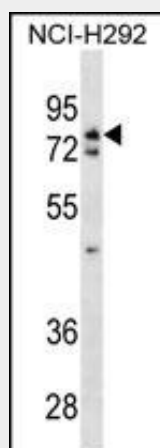
Ubiquitously expressed.

**WRNIP1 Antibody (N-term) - Protocols**

Provided below are standard protocols that you may find useful for product applications.

- [Western Blot](#)
- [Blocking Peptides](#)
- [Dot Blot](#)
- [Immunohistochemistry](#)
- [Immunofluorescence](#)
- [Immunoprecipitation](#)
- [Flow Cytometry](#)
- [Cell Culture](#)

**WRNIP1 Antibody (N-term) - Images**



WRNIP1 Antibody (N-term) (Cat. #AP19098a) western blot analysis in NCI-H292 cell line lysates (35ug/lane). This demonstrates the WRNIP1 antibody detected the WRNIP1 protein (arrow).

**WRNIP1 Antibody (N-term) - Background**

Werner's syndrome is a rare autosomal recessive disorder characterized by premature aging. The protein encoded by this gene interacts with the N-terminal portion of Werner protein containing the exonuclease domain. This protein shows homology to replication factor C family proteins, and is conserved from E. coli to human. Studies in yeast suggest that this gene may influence the aging process. Two transcript variants encoding different isoforms have been isolated for this gene.

**WRNIP1 Antibody (N-term) - References**

Kaur, S., et al. Cell Cycle 9(15):3106-3111(2010)  
Yoshimura, A., et al. Genes Genet. Syst. 84(2):171-178(2009)  
Crosetto, N., et al. J. Biol. Chem. 283(50):35173-35185(2008)  
Mano, Y., et al. Cancer Sci. 98(12):1902-1913(2007)  
Bish, R.A., et al. J. Biol. Chem. 282(32):23184-23193(2007)