

RFC1 Antibody (N-term)
Affinity Purified Rabbit Polyclonal Antibody (Pab)
Catalog # AP19110a**Specification**

RFC1 Antibody (N-term) - Product Information

Application	WB,E
Primary Accession	P35251
Other Accession	NP_002904.3
Reactivity	Human
Host	Rabbit
Clonality	Polyclonal
Isotype	Rabbit IgG
Calculated MW	128255
Antigen Region	26-54

RFC1 Antibody (N-term) - Additional Information**Gene ID** 5981**Other Names**

Replication factor C subunit 1, Activator 1 140 kDa subunit, A1 140 kDa subunit, Activator 1 large subunit, Activator 1 subunit 1, DNA-binding protein PO-GA, Replication factor C 140 kDa subunit, RF-C 140 kDa subunit, RFC140, Replication factor C large subunit, RFC1, RFC140

Target/Specificity

This RFC1 antibody is generated from rabbits immunized with a KLH conjugated synthetic peptide between 26-54 amino acids from the N-terminal region of human RFC1.

Dilution

WB~~1:1000

Format

Purified polyclonal antibody supplied in PBS with 0.09% (W/V) sodium azide. This antibody is purified through a protein A column, followed by peptide affinity purification.

Storage

Maintain refrigerated at 2-8°C for up to 2 weeks. For long term storage store at -20°C in small aliquots to prevent freeze-thaw cycles.

Precautions

RFC1 Antibody (N-term) is for research use only and not for use in diagnostic or therapeutic procedures.

RFC1 Antibody (N-term) - Protein Information**Name** RFC1

Synonyms RFC140

Function The elongation of primed DNA templates by DNA polymerase delta and epsilon requires the action of the accessory proteins PCNA and activator 1. This subunit binds to the primer-template junction. Binds the PO-B transcription element as well as other GA rich DNA sequences. Could play a role in DNA transcription regulation as well as DNA replication and/or repair. Can bind single- or double-stranded DNA.

Cellular Location

Nucleus.

Tissue Location

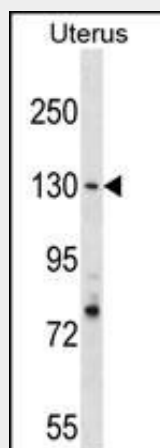
Wide tissue distribution. Undetectable in placental tissue

RFC1 Antibody (N-term) - Protocols

Provided below are standard protocols that you may find useful for product applications.

- [Western Blot](#)
- [Blocking Peptides](#)
- [Dot Blot](#)
- [Immunohistochemistry](#)
- [Immunofluorescence](#)
- [Immunoprecipitation](#)
- [Flow Cytometry](#)
- [Cell Culture](#)

RFC1 Antibody (N-term) - Images



RFC1 Antibody (N-term) (Cat. #AP19110a) western blot analysis in Uterus tissue lysates (35ug/lane). This demonstrates the RFC1 antibody detected the RFC1 protein (arrow).

RFC1 Antibody (N-term) - Background

The protein encoded by this gene is the large subunit of replication factor C, which is a five subunit DNA polymerase accessory protein. Replication factor C is a DNA-dependent ATPase that is required for eukaryotic DNA replication and repair. The protein acts as an activator of DNA polymerases, binds to the 3' end of primers, and promotes coordinated synthesis of both strands. It also may have a role in telomere stability. [provided by RefSeq].

RFC1 Antibody (N-term) - References

Overmeer, R.M., et al. Mol. Cell. Biol. 30(20):4828-4839(2010) Bailey, S.D., et al. Diabetes Care 33(10):2250-2253(2010) Arora, M., et al. Leukemia 24(8):1470-1475(2010) Galbiatti, A.L., et al. Mol. Biol. Rep. (2010) In press : Jugessur, A., et al. PLoS ONE 5 (7), E11493 (2010) :