

PES1 Antibody (C-term)
Affinity Purified Rabbit Polyclonal Antibody (Pab)
Catalog # AP19122b**Specification**

PES1 Antibody (C-term) - Product Information

Application	WB,E
Primary Accession	O00541
Other Accession	NP_055118.1
Reactivity	Human
Host	Rabbit
Clonality	Polyclonal
Isotype	Rabbit IgG
Calculated MW	68003
Antigen Region	549-578

PES1 Antibody (C-term) - Additional Information**Gene ID** 23481**Other Names**Pescadillo homolog {ECO:0000255|HAMAP-Rule:MF_03028}, PES1
{ECO:0000255|HAMAP-Rule:MF_03028}**Target/Specificity**

This PES1 antibody is generated from rabbits immunized with a KLH conjugated synthetic peptide between 549-578 amino acids from the C-terminal region of human PES1.

Dilution

WB~~1:1000

Format

Purified polyclonal antibody supplied in PBS with 0.09% (W/V) sodium azide. This antibody is purified through a protein A column, followed by peptide affinity purification.

Storage

Maintain refrigerated at 2-8°C for up to 2 weeks. For long term storage store at -20°C in small aliquots to prevent freeze-thaw cycles.

Precautions

PES1 Antibody (C-term) is for research use only and not for use in diagnostic or therapeutic procedures.

PES1 Antibody (C-term) - Protein Information**Name** PES1 {ECO:0000255|HAMAP-Rule:MF_03028}**Function** Component of the PeBoW complex, which is required for maturation of 28S and 5.8S

ribosomal RNAs and formation of the 60S ribosome.

Cellular Location

Nucleus, nucleolus. Nucleus, nucleoplasm. Chromosome. Note=Appears to localize to the periphery of metaphase chromosomes during mitosis and to the prenucleolar bodies that form in mitotic cells prior to the actual nucleoli. {ECO:0000255|HAMAP- Rule:MF_03028}

Tissue Location

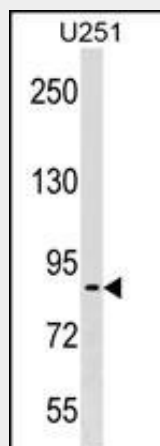
Significant levels are detected in a variety of cancer cell lines, including glioblastoma, breast carcinoma, colon carcinoma and cervical carcinoma cells. Levels are abnormally elevated in malignant tumors of astrocytic origin

PES1 Antibody (C-term) - Protocols

Provided below are standard protocols that you may find useful for product applications.

- [Western Blot](#)
- [Blocking Peptides](#)
- [Dot Blot](#)
- [Immunohistochemistry](#)
- [Immunofluorescence](#)
- [Immunoprecipitation](#)
- [Flow Cytometry](#)
- [Cell Culture](#)

PES1 Antibody (C-term) - Images



PES1 Antibody (C-term) (Cat. #AP19122b) western blot analysis in U251 cell line lysates (35ug/lane). This demonstrates the PES1 antibody detected the PES1 protein (arrow).

PES1 Antibody (C-term) - Background

This gene encodes a protein that is abnormally elevated in malignant tumors of astrocytic origin. It is a strongly conserved gene containing a BRCT domain that is essential for the activity of this gene product. The gene plays a crucial role in cell proliferation and may be necessary for oncogenic transformation and tumor progression.

PES1 Antibody (C-term) - References

Zhang, J., et al. Acta Biochim. Biophys. Sin. (Shanghai) 41(12):991-997(2009)
Li, J., et al. Cancer Sci. 100(12):2255-2260(2009)
Rikova, K., et al. Cell 131(6):1190-1203(2007)
Rohrmoser, M., et al. Mol. Cell. Biol. 27(10):3682-3694(2007)
Grimm, T., et al. Nucleic Acids Res. 34(10):3030-3043(2006)