

**EGF Antibody (C-term)**  
**Affinity Purified Rabbit Polyclonal Antibody (Pab)**  
**Catalog # AP19126b**

**Specification**

---

**EGF Antibody (C-term) - Product Information**

Application	WB,E
Primary Accession	<a href="#">P01133</a>
Other Accession	<a href="#">NP_001954.2</a>
Reactivity	Human
Host	Rabbit
Clonality	Polyclonal
Isotype	Rabbit IgG
Calculated MW	133994
Antigen Region	940-967

**EGF Antibody (C-term) - Additional Information**

**Gene ID** 1950

**Other Names**

Pro-epidermal growth factor, EGF, Epidermal growth factor, Urogastrone, EGF

**Target/Specificity**

This EGF antibody is generated from rabbits immunized with a KLH conjugated synthetic peptide between 940-967 amino acids from the C-terminal region of human EGF.

**Dilution**

WB~~1:1000

**Format**

Purified polyclonal antibody supplied in PBS with 0.09% (W/V) sodium azide. This antibody is purified through a protein A column, followed by peptide affinity purification.

**Storage**

Maintain refrigerated at 2-8°C for up to 2 weeks. For long term storage store at -20°C in small aliquots to prevent freeze-thaw cycles.

**Precautions**

EGF Antibody (C-term) is for research use only and not for use in diagnostic or therapeutic procedures.

**EGF Antibody (C-term) - Protein Information**

**Name** EGF

**Function** EGF stimulates the growth of various epidermal and epithelial tissues in vivo and in vitro and of some fibroblasts in cell culture. Magnesiotropic hormone that stimulates magnesium

reabsorption in the renal distal convoluted tubule via engagement of EGFR and activation of the magnesium channel TRPM6. Can induce neurite outgrowth in motoneurons of the pond snail *Lymnaea stagnalis* in vitro (PubMed:[10964941](#)).

**Cellular Location**

Membrane; Single-pass type I membrane protein.

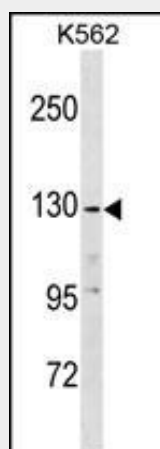
**Tissue Location**

Expressed in kidney, salivary gland, cerebrum and prostate.

**EGF Antibody (C-term) - Protocols**

Provided below are standard protocols that you may find useful for product applications.

- [Western Blot](#)
- [Blocking Peptides](#)
- [Dot Blot](#)
- [Immunohistochemistry](#)
- [Immunofluorescence](#)
- [Immunoprecipitation](#)
- [Flow Cytometry](#)
- [Cell Culture](#)

**EGF Antibody (C-term) - Images**

EGF Antibody (C-term) (Cat. #AP19126b) western blot analysis in K562 cell line lysates (35ug/lane). This demonstrates the EGF antibody detected the EGF protein (arrow).

**EGF Antibody (C-term) - Background**

This gene encodes a member of the epidermal growth factor superfamily. The encoded protein is synthesized as a large precursor molecule that is proteolytically cleaved to generate the 53-amino acid epidermal growth factor peptide. This protein acts as a potent mitogenic factor that plays an important role in the growth, proliferation and differentiation of numerous cell types. This protein acts by binding the high affinity cell surface receptor, epidermal growth factor receptor. Defects in this gene are the cause of hypomagnesemia type 4. Dysregulation of this gene has been associated with the growth and progression of certain cancers.

Alternate splicing results in multiple transcript variants.

#### **EGF Antibody (C-term) - References**

de Diesbach, M.T., et al. Exp. Cell Res. 316(19):3239-3253(2010)  
Xu, Z., et al. Biochem. Biophys. Res. Commun. 401(3):376-381(2010)  
Lupien, M., et al. Genes Dev. 24(19):2219-2227(2010)  
Hommel, U., et al. J. Mol. Biol. 227(1):271-282(1992)  
Hernandez-Sotomayor, S.M., et al. J. Membr. Biol. 128(2):81-89(1992)