

**XYLT2 Antibody (N-term)**  
**Affinity Purified Rabbit Polyclonal Antibody (Pab)**  
**Catalog # AP19159A****Specification**

---

**XYLT2 Antibody (N-term) - Product Information**

|                   |   |
|-------------------|---|
| Application       | WB,E  |
| Primary Accession | <a href="#">O9H1B5</a>  |
| Other Accession   | <a href="#">O9EPI0</a> , <a href="#">O9EPL0</a> , <a href="#">NP_071450.2</a> |
| Reactivity        | Mouse   |
| Predicted         | Rat   |
| Host              | Rabbit  |
| Clonality         | Polyclonal  |
| Isotype           | Rabbit IgG  |
| Calculated MW     | 96767   |
| Antigen Region    | 29-58   |

**XYLT2 Antibody (N-term) - Additional Information****Gene ID** 64132**Other Names**

Xylosyltransferase 2, Peptide O-xylosyltransferase 1, Xylosyltransferase II, XT-II, XylIT-II, XYLT2, XT2

**Target/Specificity**

This XYLT2 antibody is generated from rabbits immunized with a KLH conjugated synthetic peptide between 29-58 amino acids from the N-terminal region of human XYLT2.

**Dilution**

WB~~1:1000

**Format**

Purified polyclonal antibody supplied in PBS with 0.09% (W/V) sodium azide. This antibody is purified through a protein A column, followed by peptide affinity purification.

**Storage**

Maintain refrigerated at 2-8°C for up to 2 weeks. For long term storage store at -20°C in small aliquots to prevent freeze-thaw cycles.

**Precautions**

XYLT2 Antibody (N-term) is for research use only and not for use in diagnostic or therapeutic procedures.

**XYLT2 Antibody (N-term) - Protein Information****Name** XYLT2

## Synonyms XT2

**Function** Catalyzes the first step in the biosynthesis of chondroitin sulfate, heparan sulfate and dermatan sulfate proteoglycans, such as DCN. Transfers D-xylose from UDP-D-xylose to specific serine residues of the core protein.

## Cellular Location

Golgi apparatus membrane; Single-pass type II membrane protein. Secreted

## Tissue Location

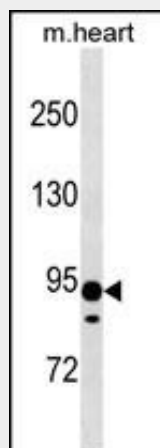
Widely expressed. Expressed at higher level in kidney and pancreas.

## XYLT2 Antibody (N-term) - Protocols

Provided below are standard protocols that you may find useful for product applications.

- [Western Blot](#)
- [Blocking Peptides](#)
- [Dot Blot](#)
- [Immunohistochemistry](#)
- [Immunofluorescence](#)
- [Immunoprecipitation](#)
- [Flow Cytometry](#)
- [Cell Culture](#)

## XYLT2 Antibody (N-term) - Images



XYLT2 Antibody (N-term) (Cat. #AP19159a) western blot analysis in mouse heart tissue lysates (35ug/lane). This demonstrates the XYLT2 antibody detected the XYLT2 protein (arrow).

## XYLT2 Antibody (N-term) - Background

The protein encoded by this gene is an isoform of xylosyltransferase, which belongs to a family of glycosyltransferases. This enzyme transfers xylose from UDP-xylose to specific serine residues of the core protein and initiates the biosynthesis of glycosaminoglycan chains in proteoglycans including chondroitin sulfate, heparan sulfate, heparin and dermatan sulfate. The enzyme activity, which is increased in scleroderma patients, is a diagnostic marker for the determination of sclerotic activity in

systemic sclerosis.

#### **XYLT2 Antibody (N-term) - References**

Condac, E., et al. Glycobiology 19(8):829-833(2009)  
Casanova, J.C., et al. Biochem. Biophys. Res. Commun. 383(1):4-10(2009)  
Ponighaus, C., et al. Am. J. Hypertens. 22(4):432-436(2009)  
Ambrosius, M., et al. Clin. Biochem. 42 (1-2), 1-4 (2009) :  
Hendig, D., et al. Clin. Chim. Acta 398 (1-2), 90-94 (2008) :