

**RLN2 Antibody (C-term)**  
**Affinity Purified Rabbit Polyclonal Antibody (Pab)**  
**Catalog # AP19181B****Specification**

---

**RLN2 Antibody (C-term) - Product Information**

Application	WB,E
Primary Accession	<a href="#">P04090</a>
Other Accession	<a href="#">NP_005050.2</a>
Reactivity	Human
Host	Rabbit
Clonality	Polyclonal
Isotype	Rabbit IgG
Calculated MW	21043
Antigen Region	139-165

**RLN2 Antibody (C-term) - Additional Information****Gene ID** 6019**Other Names**

Prorelaxin H2, Relaxin B chain, Relaxin A chain, RLN2

**Target/Specificity**

This RLN2 antibody is generated from rabbits immunized with a KLH conjugated synthetic peptide between 139-165 amino acids from the C-terminal region of human RLN2.

**Dilution**

WB~~1:1000

**Format**

Purified polyclonal antibody supplied in PBS with 0.09% (W/V) sodium azide. This antibody is purified through a protein A column, followed by peptide affinity purification.

**Storage**

Maintain refrigerated at 2-8°C for up to 2 weeks. For long term storage store at -20°C in small aliquots to prevent freeze-thaw cycles.

**Precautions**

RLN2 Antibody (C-term) is for research use only and not for use in diagnostic or therapeutic procedures.

**RLN2 Antibody (C-term) - Protein Information****Name** RLN2

**Function** Relaxin is an ovarian hormone that acts with estrogen to produce dilatation of the birth canal in many mammals. May be involved in remodeling of connective tissues during pregnancy,

promoting growth of pubic ligaments and ripening of the cervix.

#### **Cellular Location**

Secreted.

#### **Tissue Location**

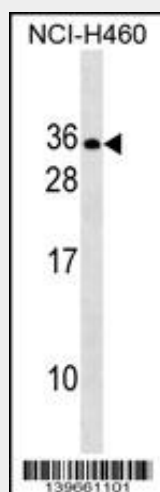
Isoform 1 is expressed in the ovary during pregnancy. Also expressed in placenta, decidua and prostate. Isoform 2 is relatively abundant in placenta. It is in much lower abundance in the prostate gland. Not detected in the ovary

### **RLN2 Antibody (C-term) - Protocols**

Provided below are standard protocols that you may find useful for product applications.

- [Western Blot](#)
- [Blocking Peptides](#)
- [Dot Blot](#)
- [Immunohistochemistry](#)
- [Immunofluorescence](#)
- [Immunoprecipitation](#)
- [Flow Cytometry](#)
- [Cell Culture](#)

### **RLN2 Antibody (C-term) - Images**



RLN2 Antibody (C-term) (Cat. #AP19181b) western blot analysis in NCI-H460 cell line lysates (35ug/lane). This demonstrates the RLN2 antibody detected the RLN2 protein (arrow).

### **RLN2 Antibody (C-term) - Background**

Relaxins are known endocrine and autocrine/paracrine hormones, belonging to the insulin gene superfamily. In the human there are three non-allelic relaxin genes, RLN1, RLN2 and RLN3. RLN1 and RLN2 share high sequence homology. The active form of the encoded protein consists of an A chain and a B chain but their cleavage sites are not definitely described yet. Relaxin is produced by the ovary, and targets the mammalian reproductive system to ripen the cervix, elongate the pubic symphysis and inhibit uterine contraction. It may have additional roles in

enhancing sperm motility, regulating blood pressure, controlling heart rate and releasing oxytocin and vasopressin. There are two alternatively spliced transcript variants encoding different isoforms described for this gene.

#### **RLN2 Antibody (C-term) - References**

Davila, S., et al. Genes Immun. 11(3):232-238(2010)  
Vogel, I., et al. In Vivo 23(6):1005-1009(2009)  
Dschietzig, T., et al. Regul. Pept. 155 (1-3), 163-173 (2009) :  
Mookerjee, I., et al. FASEB J. 23(4):1219-1229(2009)  
Svendsen, A.M., et al. Mol. Cell. Endocrinol. 296 (1-2), 10-17 (2008) :