

**TP53TG1 Antibody (N-term)**  
**Affinity Purified Rabbit Polyclonal Antibody (Pab)**  
**Catalog # AP19205a**

**Specification**

---

**TP53TG1 Antibody (N-term) - Product Information**

Application	WB,E
Primary Accession	<a href="#">Q9Y2A0</a>
Reactivity	Human
Host	Rabbit
Clonality	Polyclonal
Isotype	Rabbit IgG
Antigen Region	1-30

**TP53TG1 Antibody (N-term) - Additional Information**

**Other Names**

TP53-target gene 1 protein, TP53-inducible gene 1 protein, Tumor protein p53-activated protein 1, TP53TG1, P53TG1, TP53AP1

**Target/Specificity**

This TP53TG1 antibody is generated from rabbits immunized with a KLH conjugated synthetic peptide between 1-30 amino acids from the N-terminal region of human TP53TG1.

**Dilution**

WB~~1:1000

**Format**

Purified polyclonal antibody supplied in PBS with 0.09% (W/V) sodium azide. This antibody is purified through a protein A column, followed by peptide affinity purification.

**Storage**

Maintain refrigerated at 2-8°C for up to 2 weeks. For long term storage store at -20°C in small aliquots to prevent freeze-thaw cycles.

**Precautions**

TP53TG1 Antibody (N-term) is for research use only and not for use in diagnostic or therapeutic procedures.

**TP53TG1 Antibody (N-term) - Protein Information**

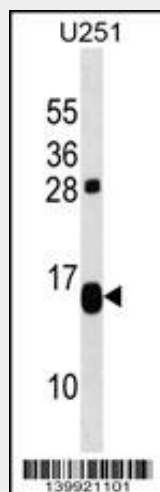
**TP53TG1 Antibody (N-term) - Protocols**

Provided below are standard protocols that you may find useful for product applications.

- [Western Blot](#)

- [Blocking Peptides](#)
- [Dot Blot](#)
- [Immunohistochemistry](#)
- [Immunofluorescence](#)
- [Immunoprecipitation](#)
- [Flow Cytometry](#)
- [Cell Culture](#)

#### **TP53TG1 Antibody (N-term) - Images**



TP53TG1 Antibody (N-term) (Cat. #AP19205a) western blot analysis in U251 cell line lysates (35ug/lane). This demonstrates the TP53TG1 antibody detected the TP53TG1 protein (arrow).

#### **TP53TG1 Antibody (N-term) - Background**

There are four known isoforms of TP53AP1.