

ZNF733 Antibody (Center)
Affinity Purified Rabbit Polyclonal Antibody (Pab)
Catalog # AP19214c**Specification**

ZNF733 Antibody (Center) - Product Information

Application	WB,E
Primary Accession	A6NKZ1
Reactivity	Human
Host	Rabbit
Clonality	Polyclonal
Isotype	Rabbit IgG
Antigen Region	156-183

ZNF733 Antibody (Center) - Additional Information**Target/Specificity**

This ZNF733 antibody is generated from rabbits immunized with a KLH conjugated synthetic peptide between 156-183 amino acids from the Central region of human ZNF733.

Dilution

WB~~1:1000

Format

Purified polyclonal antibody supplied in PBS with 0.09% (W/V) sodium azide. This antibody is purified through a protein A column, followed by peptide affinity purification.

Storage

Maintain refrigerated at 2-8°C for up to 2 weeks. For long term storage store at -20°C in small aliquots to prevent freeze-thaw cycles.

Precautions

ZNF733 Antibody (Center) is for research use only and not for use in diagnostic or therapeutic procedures.

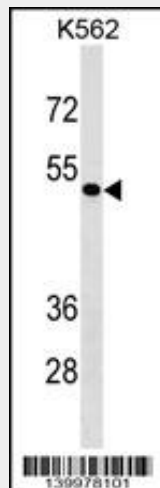
ZNF733 Antibody (Center) - Protein Information**ZNF733 Antibody (Center) - Protocols**

Provided below are standard protocols that you may find useful for product applications.

- [Western Blot](#)
- [Blocking Peptides](#)
- [Dot Blot](#)
- [Immunohistochemistry](#)
- [Immunofluorescence](#)

- [Immunoprecipitation](#)
- [Flow Cytometry](#)
- [Cell Culture](#)

ZNF733 Antibody (Center) - Images



ZNF733 Antibody (Center) (Cat. #AP19214c) western blot analysis in K562 cell line lysates (35ug/lane). This demonstrates the ZNF733 antibody detected the ZNF733 protein (arrow).

ZNF733 Antibody (Center) - Background

ZNF733 may be involved in transcriptional regulation.