

Mouse Casc5 Antibody (C-term)
Affinity Purified Rabbit Polyclonal Antibody (Pab)
Catalog # AP19227b

Specification

Mouse Casc5 Antibody (C-term) - Product Information

Application	WB,E
Primary Accession	Q66JQ7
Reactivity	Mouse
Host	Rabbit
Clonality	Polyclonal
Isotype	Rabbit IgG
Calculated MW	179337
Antigen Region	1557-1583

Mouse Casc5 Antibody (C-term) - Additional Information

Other Names

Protein CASC5, Cancer susceptibility candidate gene 5 protein homolog, Kinetochore-null protein 1, Casc5, Knl1

Target/Specificity

This Mouse Casc5 antibody is generated from rabbits immunized with a KLH conjugated synthetic peptide between 1557-1583 amino acids from the C-terminal region of mouse Casc5.

Dilution

WB~~1:1000

Format

Purified polyclonal antibody supplied in PBS with 0.09% (W/V) sodium azide. This antibody is purified through a protein A column, followed by peptide affinity purification.

Storage

Maintain refrigerated at 2-8°C for up to 2 weeks. For long term storage store at -20°C in small aliquots to prevent freeze-thaw cycles.

Precautions

Mouse Casc5 Antibody (C-term) is for research use only and not for use in diagnostic or therapeutic procedures.

Mouse Casc5 Antibody (C-term) - Protein Information

Name Knl1 {ECO:0000312|MGI:MGI:1923714}

Synonyms Casc5

Function Performs two crucial functions during mitosis: it is essential for spindle-assembly checkpoint signaling and for correct chromosome alignment. Directly links spindle checkpoint

proteins BUB1 and BUB1B to kinetochores. Part of the MIS12 complex, which may be fundamental for kinetochore formation and proper chromosome segregation during mitosis. Acts in coordination with CENPK to recruit the NDC80 complex to the outer kinetochore (By similarity).

Cellular Location

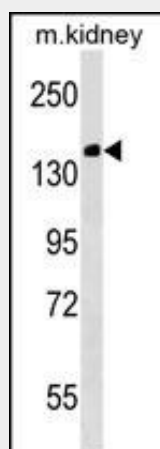
Nucleus {ECO:0000250|UniProtKB:Q8NG31}. Chromosome, centromere, kinetochore {ECO:0000250|UniProtKB:Q8NG31} Note=Weakly expressed in interphase nuclei. Expression increases from prophase to late anaphase, but greatly diminishes from the telophase and cytokinesis to early G1 phase of cell cycle (By similarity) {ECO:0000250|UniProtKB:Q8NG31}

Mouse Casc5 Antibody (C-term) - Protocols

Provided below are standard protocols that you may find useful for product applications.

- [Western Blot](#)
- [Blocking Peptides](#)
- [Dot Blot](#)
- [Immunohistochemistry](#)
- [Immunofluorescence](#)
- [Immunoprecipitation](#)
- [Flow Cytometry](#)
- [Cell Culture](#)

Mouse Casc5 Antibody (C-term) - Images



Mouse Casc5 Antibody (C-term) (Cat. #AP19227b) western blot analysis in mouse kidney tissue lysates (35ug/lane). This demonstrates the Casc5 antibody detected the Casc5 protein (arrow).

Mouse Casc5 Antibody (C-term) - Background

Performs two crucial functions during mitosis: it is essential for spindle-assembly checkpoint signaling and for correct chromosome alignment. Directly links spindle checkpoint proteins BUB1 and BUB1B to kinetochores. Part of the MIS12 complex, which may be fundamental for kinetochore formation and proper chromosome segregation during mitosis. Acts in coordination with CENPK to recruit the NDC80 complex to the outer kinetochore (By similarity).