

AMOT Antibody (Center S305)
Affinity Purified Rabbit Polyclonal Antibody (Pab)
Catalog # AP19247c**Specification**

AMOT Antibody (Center S305) - Product Information

Application	WB,E
Primary Accession	Q4VCS5
Other Accession	Q8VHG2 , NP_001106962.1
Reactivity	Human
Host	Rabbit
Clonality	Polyclonal
Isotype	Rabbit IgG
Calculated MW	118085
Antigen Region	285-312

AMOT Antibody (Center S305) - Additional Information**Gene ID** 154796**Other Names**

Angiomotin, AMOT, KIAA1071

Target/Specificity

This AMOT antibody is generated from rabbits immunized with a KLH conjugated synthetic peptide between 285-312 amino acids from the Central region of human AMOT.

Dilution

WB~~1:500-1:1000

Format

Purified polyclonal antibody supplied in PBS with 0.09% (W/V) sodium azide. This antibody is purified through a protein A column, followed by peptide affinity purification.

Storage

Maintain refrigerated at 2-8°C for up to 2 weeks. For long term storage store at -20°C in small aliquots to prevent freeze-thaw cycles.

Precautions

AMOT Antibody (Center S305) is for research use only and not for use in diagnostic or therapeutic procedures.

AMOT Antibody (Center S305) - Protein Information**Name** AMOT**Synonyms** KIAA1071

Function Plays a central role in tight junction maintenance via the complex formed with ARHGAP17, which acts by regulating the uptake of polarity proteins at tight junctions. Appears to regulate endothelial cell migration and tube formation. May also play a role in the assembly of endothelial cell-cell junctions.

Cellular Location

Cell junction, tight junction. Note=Localized on the cell surface. May act as a transmembrane protein

Tissue Location

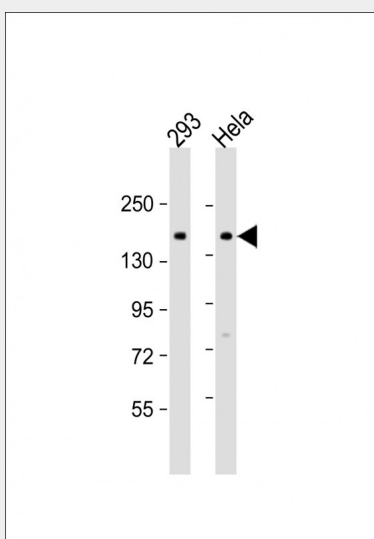
Expressed in placenta and skeletal muscle. Found in the endothelial cells of capillaries as well as larger vessels of the placenta.

AMOT Antibody (Center S305) - Protocols

Provided below are standard protocols that you may find useful for product applications.

- [Western Blot](#)
- [Blocking Peptides](#)
- [Dot Blot](#)
- [Immunohistochemistry](#)
- [Immunofluorescence](#)
- [Immunoprecipitation](#)
- [Flow Cytometry](#)
- [Cell Culture](#)

AMOT Antibody (Center S305) - Images



All lanes : Anti-AMOT Antibody (Center S305) at 1:500-1:1000 dilution Lane 1: 293 whole cell lysate Lane 2: Hela whole cell lysate Lysates/proteins at 20 µg per lane. Secondary Goat Anti-Rabbit IgG, (H+L), Peroxidase conjugated at 1/10000 dilution. Predicted band size : 118 kDa Blocking/Dilution buffer: 5% NFDM/TBST.

AMOT Antibody (Center S305) - Background

This gene belongs to the motin family of angiostatin binding proteins characterized by conserved coiled-coil domains and

C-terminal PDZ binding motifs. The encoded protein is expressed predominantly in endothelial cells of capillaries as well as larger vessels of the placenta where it may mediate the inhibitory effect of angiostatin on tube formation and the migration of endothelial cells toward growth factors during the formation of new blood vessels. Alternative splicing results in multiple transcript variants encoding different isoforms.

AMOT Antibody (Center S305) - References

Bailey, S.D., et al. Diabetes Care 33(10):2250-2253(2010)
Heller, B., et al. J. Biol. Chem. 285(16):12308-12320(2010)
Talmud, P.J., et al. Am. J. Hum. Genet. 85(5):628-642(2009)
Gagne, V., et al. Cell Motil. Cytoskeleton 66(9):754-768(2009)
Zheng, Y., et al. Circ. Res. 105(3):260-270(2009)