

IsocitRe dehydrogenase (IDH3) Antibody (C-term)
Purified Rabbit Polyclonal Antibody (Pab)
Catalog # AP1927A**Specification**

IsocitRe dehydrogenase (IDH3) Antibody (C-term) - Product Information

Application	WB,E
Primary Accession	P50213
Other Accession	Q99NA5 , Q9D6R2 , Q28480 , P41563 , P56471
Reactivity	Human
Predicted	Bovine, Monkey, Mouse, Pig, Rat
Host	Rabbit
Clonality	Polyclonal
Isotype	Rabbit IgG
Antigen Region	317-346

IsocitRe dehydrogenase (IDH3) Antibody (C-term) - Additional Information**Gene ID** 3419**Other Names**

Isocitrate dehydrogenase [NAD] subunit alpha, mitochondrial, Isocitric dehydrogenase subunit alpha, NAD(+)-specific ICDH subunit alpha, IDH3A

Target/Specificity

This Isocitrate dehydrogenase (IDH3) antibody is generated from rabbits immunized with a KLH conjugated synthetic peptide between 317-346 amino acids from the C-terminal region of human Isocitrate dehydrogenase (IDH3).

Dilution

WB~~1:1000

Format

Purified polyclonal antibody supplied in PBS with 0.09% (W/V) sodium azide. This antibody is prepared by Saturated Ammonium Sulfate (SAS) precipitation followed by dialysis against PBS.

Storage

Maintain refrigerated at 2-8°C for up to 2 weeks. For long term storage store at -20°C in small aliquots to prevent freeze-thaw cycles.

Precautions

IsocitRe dehydrogenase (IDH3) Antibody (C-term) is for research use only and not for use in diagnostic or therapeutic procedures.

IsocitRe dehydrogenase (IDH3) Antibody (C-term) - Protein Information**Name** IDH3A ([HGNC:5384](#))

Function Catalytic subunit of the enzyme which catalyzes the decarboxylation of isocitrate (ICT) into alpha-ketoglutarate. The heterodimer composed of the alpha (IDH3A) and beta (IDH3B) subunits and the heterodimer composed of the alpha (IDH3A) and gamma (IDH3G) subunits, have considerable basal activity but the full activity of the heterotetramer (containing two subunits of IDH3A, one of IDH3B and one of IDH3G) requires the assembly and cooperative function of both heterodimers.

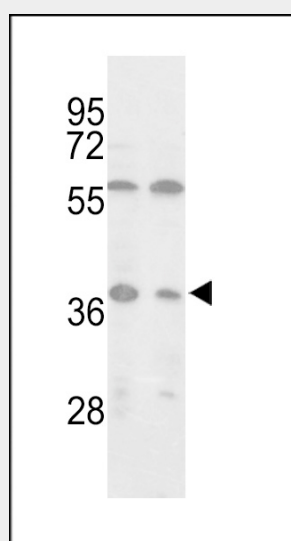
Cellular Location
Mitochondrion.

IsocitRe dehydrogenase (IDH3) Antibody (C-term) - Protocols

Provided below are standard protocols that you may find useful for product applications.

- [Western Blot](#)
- [Blocking Peptides](#)
- [Dot Blot](#)
- [Immunohistochemistry](#)
- [Immunofluorescence](#)
- [Immunoprecipitation](#)
- [Flow Cytometry](#)
- [Cell Culture](#)

IsocitRe dehydrogenase (IDH3) Antibody (C-term) - Images



Western blot analysis of Isocitrate dehydrogenase (Cat. #AP1927a) in MCF-7, Jurkat cell line lysates (35ug/lane). Isocitrate dehydrogenase (arrow) was detected using the purified Pab.

IsocitRe dehydrogenase (IDH3) Antibody (C-term) - Background

Isocitrate dehydrogenases catalyze the oxidative decarboxylation of isocitrate to 2-oxoglutarate. These enzymes belong to two distinct subclasses, one of which utilizes NAD(+) as the electron acceptor and the other NADP(+). Five isocitrate dehydrogenases have been reported: three NAD(+)-dependent isocitrate dehydrogenases, which localize to the mitochondrial matrix, and two NADP(+)-dependent isocitrate dehydrogenases, one of which is mitochondrial and the other predominantly cytosolic. NAD(+)-dependent isocitrate dehydrogenases catalyze the allosterically regulated rate-limiting step of the tricarboxylic acid cycle. Each isozyme is a heterotetramer that is

composed of two alpha subunits, one beta subunit, and one gamma subunit. The protein described here is the alpha subunit of one isozyme of NAD(+)-dependent isocitrate dehydrogenase.

IsocitRe dehydrogenase (IDH3) Antibody (C-term) - References

Soundar, S., et al., J. Biol. Chem. 278(52):52146-52153 (2003).

Weiss, C., et al., Biochemistry 39(7):1807-1816 (2000).

Kim, Y.O., et al., J. Biol. Chem. 274(52):36866-36875 (1999).

Huh, T.L., et al., Genomics 32(2):295-296 (1996).

Kim, Y.O., et al., Biochem. J. 308 (PT 1), 63-68 (1995) (): ().

IsocitRe dehydrogenase (IDH3) Antibody (C-term) - Citations

- [Novel mitochondrial substrates of omi indicate a new regulatory role in neurodegenerative disorders.](#)