

**Mouse Ei24 Antibody (C-term)**  
**Affinity Purified Rabbit Polyclonal Antibody (Pab)**  
**Catalog # AP19339b****Specification**

---

**Mouse Ei24 Antibody (C-term) - Product Information**

Application	WB,E
Primary Accession	<a href="#">Q61070</a>
Other Accession	<a href="#">Q4KM77</a> , <a href="#">O14681</a> , <a href="#">Q08DE5</a> , <a href="#">NP_031941.1</a>
Reactivity	Mouse
Predicted	Bovine, Human, Rat
Host	Rabbit
Clonality	Polyclonal
Isotype	Rabbit IgG
Calculated MW	38933
Antigen Region	263-290

**Mouse Ei24 Antibody (C-term) - Additional Information****Gene ID** 13663**Other Names**

Etoposide-induced protein 24, p53-induced gene 8 protein, Ei24, Pig8

**Target/Specificity**

This Mouse Ei24 antibody is generated from rabbits immunized with a KLH conjugated synthetic peptide between 263-290 amino acids from the C-terminal region of mouse Ei24.

**Dilution**

WB~~1:1000

**Format**

Purified polyclonal antibody supplied in PBS with 0.09% (W/V) sodium azide. This antibody is purified through a protein A column, followed by peptide affinity purification.

**Storage**

Maintain refrigerated at 2-8°C for up to 2 weeks. For long term storage store at -20°C in small aliquots to prevent freeze-thaw cycles.

**Precautions**

Mouse Ei24 Antibody (C-term) is for research use only and not for use in diagnostic or therapeutic procedures.

**Mouse Ei24 Antibody (C-term) - Protein Information****Name** Ei24**Synonyms** Pig8

**Function** Acts as a negative growth regulator via p53-mediated apoptosis pathway. Regulates formation of degradative autolysosomes during autophagy (By similarity).

**Cellular Location**

Nucleus membrane; Multi-pass membrane protein. Cytoplasm. Endoplasmic reticulum membrane; Multi-pass membrane protein

**Tissue Location**

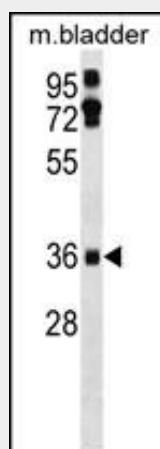
Found in all the examined tissues. High expression was found in liver, skeletal muscle, pancreas, kidney heart and to a lesser extent in brain, placenta and lung

**Mouse Ei24 Antibody (C-term) - Protocols**

Provided below are standard protocols that you may find useful for product applications.

- [Western Blot](#)
- [Blocking Peptides](#)
- [Dot Blot](#)
- [Immunohistochemistry](#)
- [Immunofluorescence](#)
- [Immunoprecipitation](#)
- [Flow Cytometry](#)
- [Cell Culture](#)

**Mouse Ei24 Antibody (C-term) - Images**



Mouse Ei24 Antibody (C-term)(Cat. #AP19339b) western blot analysis in mouse bladder tissue lysates (35ug/lane). This demonstrates the Ei24 antibody detected the Ei24 protein (arrow).

**Mouse Ei24 Antibody (C-term) - Background**

Ei24 may play a role in the cellular response to DNA damage and/or p53-mediated apoptosis.

**Mouse Ei24 Antibody (C-term) - References**

Bahk, Y.Y., et al. J. Proteome Res. 9(10):5270-5283(2010)  
Mork, C.N., et al. FEBS Lett. 581(28):5440-5444(2007)  
Lee, J., et al. Mol. Cell Proteomics 6(4):669-676(2007)  
Colombo, E., et al. Mol. Cell. Biol. 25(20):8874-8886(2005)  
McClive, P.J., et al. Genesis 37(2):84-90(2003)