

Mouse Ccna1 Antibody (Center)
Affinity Purified Rabbit Polyclonal Antibody (Pab)
Catalog # AP19342C**Specification**

Mouse Ccna1 Antibody (Center) - Product Information

Application	WB,E
Primary Accession	Q61456
Other Accession	Q6AY13 , NP_031654.2
Reactivity	Mouse
Predicted	Rat
Host	Rabbit
Clonality	Polyclonal
Isotype	Rabbit IgG
Calculated MW	47772
Antigen Region	162-188

Mouse Ccna1 Antibody (Center) - Additional Information**Gene ID** 12427**Other Names**

Cyclin-A1, Ccna1

Target/Specificity

This Mouse Ccna1 antibody is generated from rabbits immunized with a KLH conjugated synthetic peptide between 162-188 amino acids from the Central region of mouse Ccna1.

Dilution

WB~~1:1000

Format

Purified polyclonal antibody supplied in PBS with 0.09% (W/V) sodium azide. This antibody is purified through a protein A column, followed by peptide affinity purification.

Storage

Maintain refrigerated at 2-8°C for up to 2 weeks. For long term storage store at -20°C in small aliquots to prevent freeze-thaw cycles.

Precautions

Mouse Ccna1 Antibody (Center) is for research use only and not for use in diagnostic or therapeutic procedures.

Mouse Ccna1 Antibody (Center) - Protein Information**Name** Ccna1**Function** May be involved in the control of the cell cycle at the G1/S (start) and G2/M (mitosis)

transitions. May primarily function in the control of the germline meiotic cell cycle and additionally in the control of mitotic cell cycle in some somatic cells.

Cellular Location

Nucleus. Cytoplasm, cytoskeleton, spindle. Note=In oocytes at least, it associates with the spindle during metaphase

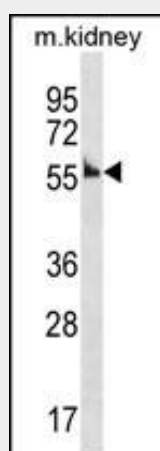
Tissue Location

Testis and ovaries.

Mouse Ccna1 Antibody (Center) - Protocols

Provided below are standard protocols that you may find useful for product applications.

- [Western Blot](#)
- [Blocking Peptides](#)
- [Dot Blot](#)
- [Immunohistochemistry](#)
- [Immunofluorescence](#)
- [Immunoprecipitation](#)
- [Flow Cytometry](#)
- [Cell Culture](#)

Mouse Ccna1 Antibody (Center) - Images

Mouse Ccna1 Antibody (Center)(Cat. #AP19342c) western blot analysis in mouse kidney tissue lysates (35ug/lane). This demonstrates the Ccna1 antibody detected the Ccna1 protein (arrow).

Mouse Ccna1 Antibody (Center) - Background

Ccna1 may be involved in the control of the cell cycle at the G1/S (start) and G2/M (mitosis) transitions. May primarily function in the control of the germline meiotic cell cycle and additionally in the control of mitotic cell cycle in some somatic cells.

Mouse Ccna1 Antibody (Center) - References

- Yoshimura, T., et al. Dev. Biol. 335(1):216-227(2009)
Burnicka-Turek, O., et al. Endocrinology 150(9):4348-4357(2009)
McCoy, E.L., et al. Oral Dis 15(6):407-413(2009)
Kalaszczynska, I., et al. Cell 138(2):352-365(2009)

Krug, U., et al. Int. J. Oncol. 34(1):129-136(2009)