

CAPNS2 Antibody (Center)
Affinity Purified Rabbit Polyclonal Antibody (Pab)
Catalog # AP19354c

Specification

CAPNS2 Antibody (Center) - Product Information

Application	WB,E
Primary Accession	O96L46
Other Accession	O9D7J7 , NP_115706.1
Reactivity	Human, Mouse
Host	Rabbit
Clonality	Polyclonal
Isotype	Rabbit IgG
Calculated MW	27660
Antigen Region	55-83

CAPNS2 Antibody (Center) - Additional Information

Gene ID 84290

Other Names

Calpain small subunit 2, CSS2, Calcium-dependent protease small subunit 2, CAPNS2

Target/Specificity

This CAPNS2 antibody is generated from rabbits immunized with a KLH conjugated synthetic peptide between 55-83 amino acids from the Central region of human CAPNS2.

Dilution

WB~~1:1000

Format

Purified polyclonal antibody supplied in PBS with 0.09% (W/V) sodium azide. This antibody is purified through a protein A column, followed by peptide affinity purification.

Storage

Maintain refrigerated at 2-8°C for up to 2 weeks. For long term storage store at -20°C in small aliquots to prevent freeze-thaw cycles.

Precautions

CAPNS2 Antibody (Center) is for research use only and not for use in diagnostic or therapeutic procedures.

CAPNS2 Antibody (Center) - Protein Information

Name CAPNS2

Function Calcium-regulated non-lysosomal thiol-protease which catalyzes limited proteolysis of substrates involved in cytoskeletal remodeling and signal transduction. This small subunit may act

as a tissue-specific chaperone of the large subunit, possibly by helping it fold into its correct conformation for activity.

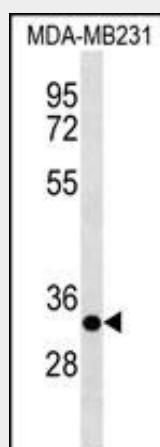
Cellular Location

Cytoplasm. Cell membrane. Note=Translocates to the plasma membrane upon calcium binding.

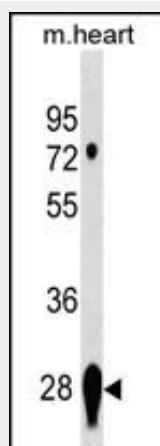
CAPNS2 Antibody (Center) - Protocols

Provided below are standard protocols that you may find useful for product applications.

- [Western Blot](#)
- [Blocking Peptides](#)
- [Dot Blot](#)
- [Immunohistochemistry](#)
- [Immunofluorescence](#)
- [Immunoprecipitation](#)
- [Flow Cytometry](#)
- [Cell Culture](#)

CAPNS2 Antibody (Center) - Images

CAPNS2 Antibody (Center)(Cat. #AP19354c) western blot analysis in MDA-MB231 cell line lysates (35ug/lane). This demonstrates the CAPNS2 antibody detected the CAPNS2 protein (arrow).



CAPNS2 Antibody (Center) (Cat. #AP19354c) western blot analysis in mouse heart tissue lysates

(35ug/lane). This demonstrates the CAPNS2 antibody detected the CAPNS2 protein (arrow).

CAPNS2 Antibody (Center) - Background

Calcium-regulated non-lysosomal thiol-protease which catalyzes limited proteolysis of substrates involved in cytoskeletal remodeling and signal transduction. This small subunit may act as a tissue-specific chaperone of the large subunit, possibly by helping it fold into its correct conformation for activity.

CAPNS2 Antibody (Center) - References

Bailey, S.D., et al. Diabetes Care 33(10):2250-2253(2010)
Talmud, P.J., et al. Am. J. Hum. Genet. 85(5):628-642(2009)
Lamesch, P., et al. Genomics 89(3):307-315(2007)
Ma, H., et al. Curr. Eye Res. 29 (4-5), 337-347 (2004) :
Schad, E., et al. Biochem. J. 362 (PT 2), 383-388 (2002) :