

SMG5 Antibody (C-term)
Affinity Purified Rabbit Polyclonal Antibody (Pab)
Catalog # AP19361B

Specification

SMG5 Antibody (C-term) - Product Information

Application	WB,E
Primary Accession	O9UPR3
Other Accession	O6ZPY2 , NP_056142.2
Reactivity	Human
Predicted	Mouse
Host	Rabbit
Clonality	Polyclonal
Isotype	Rabbit IgG
Calculated MW	113928
Antigen Region	912-941

SMG5 Antibody (C-term) - Additional Information

Gene ID 23381

Other Names

Protein SMG5, EST1-like protein B, LPTS-RP1, LPTS-interacting protein, SMG-5 homolog, hSMG-5, SMG5, EST1B, KIAA1089

Target/Specificity

This SMG5 antibody is generated from rabbits immunized with a KLH conjugated synthetic peptide between 912-941 amino acids from the C-terminal region of human SMG5.

Dilution

WB~~1:1000

Format

Purified polyclonal antibody supplied in PBS with 0.09% (W/V) sodium azide. This antibody is purified through a protein A column, followed by peptide affinity purification.

Storage

Maintain refrigerated at 2-8°C for up to 2 weeks. For long term storage store at -20°C in small aliquots to prevent freeze-thaw cycles.

Precautions

SMG5 Antibody (C-term) is for research use only and not for use in diagnostic or therapeutic procedures.

SMG5 Antibody (C-term) - Protein Information

Name SMG5 ([HGNC:24644](#))

Function Plays a role in nonsense-mediated mRNA decay. Does not have RNase activity by itself. Promotes dephosphorylation of UPF1. Together with SMG7 is thought to provide a link to the mRNA degradation machinery involving exonucleolytic pathways, and to serve as an adapter for UPF1 to protein phosphatase 2A (PP2A), thereby triggering UPF1 dephosphorylation. Necessary for TERT activity.

Cellular Location

Cytoplasm. Nucleus. Note=Predominantly cytoplasmic, and nuclear. Shuttles between nucleus and cytoplasm. Detected in cytoplasmic mRNA decay bodies

Tissue Location

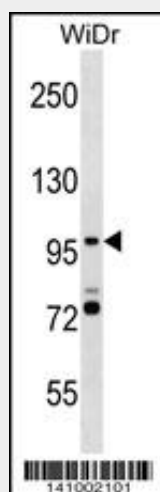
Ubiquitous.

SMG5 Antibody (C-term) - Protocols

Provided below are standard protocols that you may find useful for product applications.

- [Western Blot](#)
- [Blocking Peptides](#)
- [Dot Blot](#)
- [Immunohistochemistry](#)
- [Immunofluorescence](#)
- [Immunoprecipitation](#)
- [Flow Cytometry](#)
- [Cell Culture](#)

SMG5 Antibody (C-term) - Images



SMG5 Antibody (C-term)(Cat. #AP19361b) western blot analysis in WiDr cell line lysates (35ug/lane). This demonstrates the SMG5 antibody detected the SMG5 protein (arrow).

SMG5 Antibody (C-term) - Background

SMG5 is involved in nonsense-mediated mRNA decay (Ohnishi et al., 2003 [PubMed 14636577]).

SMG5 Antibody (C-term) - References

Kamatani, Y., et al. Nat. Genet. 42(3):210-215(2010)

Glavan, F., et al. EMBO J. 25(21):5117-5125(2006)
Lee, H., et al. Mol. Cell. Biol. 26(14):5259-5269(2006)
Azzalin, C.M., et al. Curr. Biol. 16(4):433-439(2006)
Unterholzner, L., et al. Mol. Cell 16(4):587-596(2004)