

**Mouse Tmem158 Antibody(Center)**  
**Affinity Purified Rabbit Polyclonal Antibody (Pab)**  
**Catalog # AP19388c****Specification**

---

**Mouse Tmem158 Antibody(Center) - Product Information**

Application	WB,E
Primary Accession	<a href="#">Q6F5E0</a>
Other Accession	<a href="#">Q91XV7</a> , <a href="#">Q8WZ71</a> , <a href="#">A2VDX9</a>
Reactivity	Mouse
Predicted	Bovine, Human, Rat
Host	Rabbit
Clonality	Polyclonal
Isotype	Rabbit IgG
Calculated MW	29145
Antigen Region	179-206

**Mouse Tmem158 Antibody(Center) - Additional Information****Other Names**

Transmembrane protein 158, 40 kDa BINP-binding protein, p40BBP, Ras-induced senescence protein 1, Tmem158, Mbbp, Ris1

**Target/Specificity**

This Mouse Tmem158 antibody is generated from rabbits immunized with a KLH conjugated synthetic peptide between 179-206 amino acids from the Central region of mouse Tmem158.

**Dilution**

WB~~1:1000

**Format**

Purified polyclonal antibody supplied in PBS with 0.09% (W/V) sodium azide. This antibody is purified through a protein A column, followed by peptide affinity purification.

**Storage**

Maintain refrigerated at 2-8°C for up to 2 weeks. For long term storage store at -20°C in small aliquots to prevent freeze-thaw cycles.

**Precautions**

Mouse Tmem158 Antibody(Center) is for research use only and not for use in diagnostic or therapeutic procedures.

**Mouse Tmem158 Antibody(Center) - Protein Information**

**Name** Tmem158

**Synonyms** Mbbp, Ris1

**Function** Receptor for brain injury-derived neurotrophic peptide (BINP), a synthetic 13-mer peptide.

**Cellular Location**

Membrane; Multi-pass membrane protein

**Tissue Location**

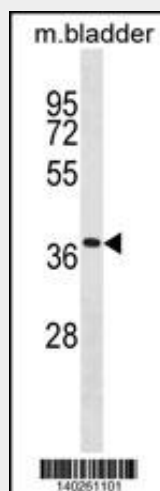
Ubiquitously expressed. Brain is the major site of expression.

**Mouse Tmem158 Antibody(Center) - Protocols**

Provided below are standard protocols that you may find useful for product applications.

- [Western Blot](#)
- [Blocking Peptides](#)
- [Dot Blot](#)
- [Immunohistochemistry](#)
- [Immunofluorescence](#)
- [Immunoprecipitation](#)
- [Flow Cytometry](#)
- [Cell Culture](#)

**Mouse Tmem158 Antibody(Center) - Images**



Mouse Tmem158 Antibody (Center)(Cat. #AP19388c) western blot analysis in mouse bladder tissue lysates (35ug/lane). This demonstrates the Mouse Tmem158 antibody detected the Mouse Tmem158 protein (arrow).

**Mouse Tmem158 Antibody(Center) - Background**

Receptor for brain injury-derived neurotrophic peptide (BINP), a synthetic 13-mer peptide (By similarity).