

**RALBP1 Antibody(N-term)**  
**Affinity Purified Rabbit Polyclonal Antibody (Pab)**  
**Catalog # AP19392A****Specification**

---

**RALBP1 Antibody(N-term) - Product Information**

|                   |                             |
|-------------------|-----------------------------|
| Application       | WB,E                        |
| Primary Accession | <a href="#">Q15311</a>      |
| Other Accession   | <a href="#">NP_006779.1</a> |
| Reactivity        | Human                       |
| Host              | Rabbit                      |
| Clonality         | Polyclonal                  |
| Isotype           | Rabbit IgG                  |
| Calculated MW     | 76063                       |
| Antigen Region    | 42-71                       |

**RALBP1 Antibody(N-term) - Additional Information****Gene ID** 10928**Other Names**

RalA-binding protein 1, RalBP1, 76 kDa Ral-interacting protein, Dinitrophenyl S-glutathione ATPase, DNP-SG ATPase, Ral-interacting protein 1, RALBP1, RLIP1, RLIP76

**Target/Specificity**

This RALBP1 antibody is generated from rabbits immunized with a KLH conjugated synthetic peptide between 42-71 amino acids from the N-terminal region of human RALBP1.

**Dilution**

WB~~1:1000

**Format**

Purified polyclonal antibody supplied in PBS with 0.09% (W/V) sodium azide. This antibody is purified through a protein A column, followed by peptide affinity purification.

**Storage**

Maintain refrigerated at 2-8°C for up to 2 weeks. For long term storage store at -20°C in small aliquots to prevent freeze-thaw cycles.

**Precautions**

RALBP1 Antibody(N-term) is for research use only and not for use in diagnostic or therapeutic procedures.

**RALBP1 Antibody(N-term) - Protein Information****Name** RALBP1 ([HGNC:9841](#))**Function** Multifunctional protein that functions as a downstream effector of RALA and RALB

(PubMed:[7673236](#)). As a GTPase-activating protein/GAP can inactivate CDC42 and RAC1 by stimulating their GTPase activity (PubMed:[7673236](#)). As part of the Ral signaling pathway, may also regulate ligand-dependent EGF and insulin receptors-mediated endocytosis (PubMed:[10910768](#), PubMed:[12775724](#)). During mitosis, may act as a scaffold protein in the phosphorylation of EPSIN/EPN1 by the mitotic kinase cyclin B-CDK1, preventing endocytosis during that phase of the cell cycle (PubMed:[12775724](#)). During mitosis, also controls mitochondrial fission as an effector of RALA (PubMed:[21822277](#)). Recruited to mitochondrion by RALA, acts as a scaffold to foster the mitotic kinase cyclin B-CDK1-mediated phosphorylation and activation of DNML (PubMed:[21822277](#)).

#### **Cellular Location**

Cell membrane; Peripheral membrane protein. Cytoplasm, cytosol Cytoplasm, cytoskeleton, spindle pole {ECO:0000250|UniProtKB:Q62796} Nucleus. Mitochondrion. Note=Cytosolic protein that transiently associates with the mitotic spindle poles in early prophase, and dissociates from them after completion of mitosis (By similarity) Targeted to the plasma membrane through its interaction with RALB, directed by FGF signaling. Docking on the membrane is required to transduce the Ral signal (By similarity). Recruited by RALA to the mitochondrion during mitosis where it regulates mitochondrial fission (PubMed:21822277). Nuclear localization is cell cycle dependent while membrane localization is seen in adherent cells (PubMed:22319010). The region involved in membrane association could form transmembrane domains and expose a part of the protein extracellularly (Probable) {ECO:0000250|UniProtKB:Q62796, ECO:0000250|UniProtKB:Q9PT60, ECO:0000269|PubMed:21822277, ECO:0000269|PubMed:22319010, ECO:0000305|PubMed:15610018}

#### **Tissue Location**

Expressed ubiquitously but at low levels. Shows a strong expression in the erythrocytes.

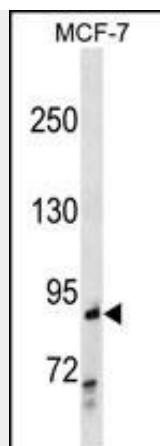
#### **RALBP1 Antibody(N-term) - Protocols**

Provided below are standard protocols that you may find useful for product applications.

- [Western Blot](#)
- [Blocking Peptides](#)
- [Dot Blot](#)
- [Immunohistochemistry](#)
- [Immunofluorescence](#)
- [Immunoprecipitation](#)
- [Flow Cytometry](#)
- [Cell Culture](#)

#### **RALBP1 Antibody(N-term) - Images**





RALBP1 Antibody (N-term)(Cat. #AP19392a) western blot analysis in MCF-7 cell line lysates (35ug/lane). This demonstrates the RALBP1 antibody detected the RALBP1 protein (arrow).

#### **RALBP1 Antibody(N-term) - Background**

RALBP1 plays a role in receptor-mediated endocytosis and is a downstream effector of the small GTP-binding protein RAL (see RALA; MIM 179550). Small G proteins, such as RAL, have GDP-bound inactive and GTP-bound active forms, which shift from the inactive to the active state through the action of RALGDS (MIM 601619), which in turn is activated by RAS (see HRAS; MIM 190020) (summary by Feig, 2003 [PubMed 12888294]).

#### **RALBP1 Antibody(N-term) - References**

- Singhal, S.S., et al. Int. J. Cancer 126(6):1327-1338(2010)
- Singhal, S.S., et al. Cancer Lett. 283(2):152-158(2009)
- Awasthi, Y.C., et al. J Toxicol Environ Health B Crit Rev 12(7):540-551(2009)
- Singhal, S.S., et al. Cancer Res. 69(10):4244-4251(2009)
- Singhal, S.S., et al. Biochem. Pharmacol. 77(6):1074-1083(2009)