

COL10A1 Antibody(N-term)
Affinity Purified Rabbit Polyclonal Antibody (Pab)
Catalog # AP19393a**Specification**

COL10A1 Antibody(N-term) - Product Information

Application	WB,E
Primary Accession	Q03692
Other Accession	NP_000484.2
Reactivity	Human
Host	Rabbit
Clonality	Polyclonal
Isotype	Rabbit IgG
Calculated MW	66158
Antigen Region	29-58

COL10A1 Antibody(N-term) - Additional Information**Gene ID** 1300**Other Names**

Collagen alpha-1(X) chain, COL10A1

Target/Specificity

This COL10A1 antibody is generated from rabbits immunized with a KLH conjugated synthetic peptide between 29-58 amino acids from the N-terminal region of human COL10A1.

Dilution

WB~~1:1000

Format

Purified polyclonal antibody supplied in PBS with 0.09% (W/V) sodium azide. This antibody is purified through a protein A column, followed by peptide affinity purification.

Storage

Maintain refrigerated at 2-8°C for up to 2 weeks. For long term storage store at -20°C in small aliquots to prevent freeze-thaw cycles.

Precautions

COL10A1 Antibody(N-term) is for research use only and not for use in diagnostic or therapeutic procedures.

COL10A1 Antibody(N-term) - Protein Information**Name** COL10A1

Function Type X collagen is a product of hypertrophic chondrocytes and has been localized to presumptive mineralization zones of hyaline cartilage.

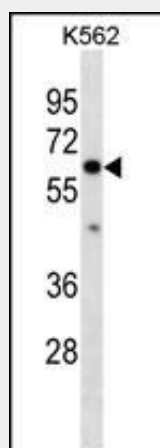
Cellular Location

Secreted, extracellular space, extracellular matrix

COL10A1 Antibody(N-term) - Protocols

Provided below are standard protocols that you may find useful for product applications.

- [Western Blot](#)
- [Blocking Peptides](#)
- [Dot Blot](#)
- [Immunohistochemistry](#)
- [Immunofluorescence](#)
- [Immunoprecipitation](#)
- [Flow Cytometry](#)
- [Cell Culture](#)

COL10A1 Antibody(N-term) - Images

COL10A1 Antibody (N-term)(Cat. #AP19393a) western blot analysis in K562 cell line lysates (35ug/lane). This demonstrates the COL10A1 antibody detected the COL10A1 protein (arrow).

COL10A1 Antibody(N-term) - Background

This gene encodes the alpha chain of type X collagen, a short chain collagen expressed by hypertrophic chondrocytes during endochondral ossification. Unlike type VIII collagen, the other short chain collagen, type X collagen is a homotrimer. Mutations in this gene are associated with Schmid type metaphyseal chondrodysplasia (SMCD) and Japanese type spondylometaphyseal dysplasia (SMD).

COL10A1 Antibody(N-term) - References

Makitie, O., et al. J. Orthop. Res. 28(11):1497-1501(2010)
Wang, S., et al. Connect. Tissue Res. 51(3):188-196(2010)
Videman, T., et al. Arthritis Rheum. 60(2):470-481(2009)
Higashikawa, A., et al. Arthritis Rheum. 60(1):166-178(2009)
Zimmermann, P., et al. Arthritis Rheum. 58(9):2743-2753(2008)