

**SMYD5 Antibody(C-term)**  
**Affinity Purified Rabbit Polyclonal Antibody (Pab)**  
**Catalog # AP19403b****Specification**

---

**SMYD5 Antibody(C-term) - Product Information**

Application	WB,E
Primary Accession	<a href="#">Q6GMV2</a>
Other Accession	<a href="#">Q3TYX3</a> , <a href="#">NP_006053.2</a>
Reactivity	Human
Predicted	Mouse
Host	Rabbit
Clonality	Polyclonal
Isotype	Rabbit IgG
Calculated MW	47341
Antigen Region	343-371

**SMYD5 Antibody(C-term) - Additional Information****Gene ID** 10322**Other Names**

SET and MYND domain-containing protein 5, 211-, Protein NN8-4AG, Retinoic acid-induced protein 15, SMYD5, RAI15

**Target/Specificity**

This SMYD5 antibody is generated from rabbits immunized with a KLH conjugated synthetic peptide between 343-371 amino acids from the C-terminal region of human SMYD5.

**Dilution**

WB~~1:1000

**Format**

Purified polyclonal antibody supplied in PBS with 0.09% (W/V) sodium azide. This antibody is purified through a protein A column, followed by peptide affinity purification.

**Storage**

Maintain refrigerated at 2-8°C for up to 2 weeks. For long term storage store at -20°C in small aliquots to prevent freeze-thaw cycles.

**Precautions**

SMYD5 Antibody(C-term) is for research use only and not for use in diagnostic or therapeutic procedures.

**SMYD5 Antibody(C-term) - Protein Information****Name** SMYD5

## Synonyms RAI15

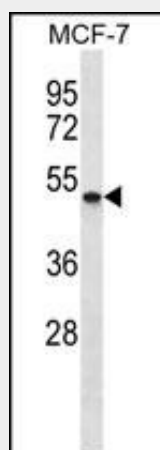
**Function** Histone methyltransferase that specifically trimethylates 'Lys-20' of histone H4 to form trimethylated histone H4 lysine 20 (H4K20me3) which represents a specific tag for epigenetic transcriptional repression (By similarity). In association with the NCoR corepressor complex, is involved in the repression of toll-like receptor 4 (TLR4)-target inflammatory genes in macrophages by catalyzing the formation of H4K20me3 at the gene promoters (By similarity). Plays an important role in embryonic stem (ES) cell self- renewal and differentiation (By similarity). Promotes ES cell maintenance by silencing differentiation genes through deposition of H4K20me3 marks (By similarity). Maintains genome stability of ES cells during differentiation through regulation of heterochromatin formation and repression of endogenous repetitive DNA elements by depositing H4K20me3 marks (PubMed:[28951459](#)).

## SMYD5 Antibody(C-term) - Protocols

Provided below are standard protocols that you may find useful for product applications.

- [Western Blot](#)
- [Blocking Peptides](#)
- [Dot Blot](#)
- [Immunohistochemistry](#)
- [Immunofluorescence](#)
- [Immunoprecipitation](#)
- [Flow Cytometry](#)
- [Cell Culture](#)

## SMYD5 Antibody(C-term) - Images



SMYD5 Antibody (C-term)(Cat. #AP19403b) western blot analysis in MCF-7 cell line lysates (35ug/lane). This demonstrates the SMYD5 antibody detected the SMYD5 protein (arrow).

## SMYD5 Antibody(C-term) - Background

SMYD5 contains 1 MYND-type zinc finger and 1 SET domain. The exact function of SMYD5 remains unknown.

## SMYD5 Antibody(C-term) - References

Shago, M., et al. Mol. Cell. Biol. 16(8):4337-4348(1996)