

**ING2 Antibody(Center)**  
**Affinity Purified Rabbit Polyclonal Antibody (Pab)**  
**Catalog # AP19411c****Specification**

---

**ING2 Antibody(Center) - Product Information**

Application	WB,E
Primary Accession	<a href="#">O9H160</a>
Other Accession	<a href="#">NP_001555.1</a>
Reactivity	Human
Host	Rabbit
Clonality	Polyclonal
Isotype	Rabbit IgG
Calculated MW	32808
Antigen Region	112-141

**ING2 Antibody(Center) - Additional Information****Gene ID** 3622**Other Names**

Inhibitor of growth protein 2, Inhibitor of growth 1-like protein, ING1Lp, p32, p33ING2, ING2, ING1L

**Target/Specificity**

This ING2 antibody is generated from rabbits immunized with a KLH conjugated synthetic peptide between 112-141 amino acids from the Central region of human ING2.

**Dilution**

WB~~1:1000

**Format**

Purified polyclonal antibody supplied in PBS with 0.09% (W/V) sodium azide. This antibody is purified through a protein A column, followed by peptide affinity purification.

**Storage**

Maintain refrigerated at 2-8°C for up to 2 weeks. For long term storage store at -20°C in small aliquots to prevent freeze-thaw cycles.

**Precautions**

ING2 Antibody(Center) is for research use only and not for use in diagnostic or therapeutic procedures.

**ING2 Antibody(Center) - Protein Information****Name** ING2**Synonyms** ING1L

**Function** Seems to be involved in p53/TP53 activation and p53/TP53- dependent apoptotic pathways, probably by enhancing acetylation of p53/TP53. Component of a mSin3A-like corepressor complex, which is probably involved in deacetylation of nucleosomal histones. ING2 activity seems to be modulated by binding to phosphoinositides (PtdInsPs).

#### **Cellular Location**

Nucleus. Note=Predominantly nuclear. Localized to chromatin and nuclear matrix Upon reduced PtdIns(5)P levels seems to be released from chromatin and, at least partially, translocated to the cytoplasm

#### **Tissue Location**

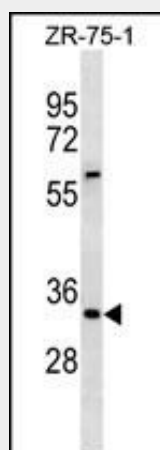
Widely expressed. Higher expressed in colon-cancer tumor than in normal colon tissues.

### **ING2 Antibody(Center) - Protocols**

Provided below are standard protocols that you may find useful for product applications.

- [Western Blot](#)
- [Blocking Peptides](#)
- [Dot Blot](#)
- [Immunohistochemistry](#)
- [Immunofluorescence](#)
- [Immunoprecipitation](#)
- [Flow Cytometry](#)
- [Cell Culture](#)

### **ING2 Antibody(Center) - Images**



ING2 Antibody (Center)(Cat. #AP19411c) western blot analysis in ZR-75-1 cell line lysates (35ug/lane). This demonstrates the ING2 antibody detected the ING2 protein (arrow).

### **ING2 Antibody(Center) - Background**

This gene is a member of the inhibitor of growth (ING) family. Members of the ING family associate with and modulate the activity of histone acetyltransferase (HAT) and histone deacetylase (HDAC) complexes and function in DNA repair and apoptosis.

### **ING2 Antibody(Center) - References**

Ythier, D., et al. Oncogene 29(44):5946-5956(2010)  
Larrieu, D., et al. EMBO Rep. 10(10):1168-1174(2009)  
Kumamoto, K., et al. Int. J. Cancer 125(6):1306-1315(2009)  
Borkosky, S.S., et al. J. Cancer Res. Clin. Oncol. 135(5):703-713(2009)  
Unoki, M., et al. FEBS Lett. 582(28):3868-3874(2008)