

**Cleavage stimulation factor 2 (CSTF2) Antibody (N-term)**  
**Purified Rabbit Polyclonal Antibody (Pab)**  
**Catalog # AP1942a****Specification**

---

**Cleavage stimulation factor 2 (CSTF2) Antibody (N-term) - Product Information**

Application	WB,E
Primary Accession	<a href="#">P33240</a>
Other Accession	<a href="#">Q8C7E9</a> , <a href="#">Q9H0L4</a> , <a href="#">Q8BIQ5</a> , <a href="#">Q8HXM1</a>
Reactivity	Human
Predicted	Bovine, Mouse
Host	Rabbit
Clonality	Polyclonal
Isotype	Rabbit IgG
Calculated MW	60959
Antigen Region	31-60

**Cleavage stimulation factor 2 (CSTF2) Antibody (N-term) - Additional Information****Gene ID** 1478**Other Names**

Cleavage stimulation factor subunit 2, CF-1 64 kDa subunit, Cleavage stimulation factor 64 kDa subunit, CSTF 64 kDa subunit, CstF-64, CSTF2

**Target/Specificity**

This Cleavage stimulation factor 2 (CSTF2) antibody is generated from rabbits immunized with a KLH conjugated synthetic peptide between 31-60 amino acids from the N-terminal region of human Cleavage stimulation factor 2 (CSTF2).

**Dilution**

WB~~1:1000

**Format**

Purified polyclonal antibody supplied in PBS with 0.09% (W/V) sodium azide. This antibody is prepared by Saturated Ammonium Sulfate (SAS) precipitation followed by dialysis against PBS.

**Storage**

Maintain refrigerated at 2-8°C for up to 2 weeks. For long term storage store at -20°C in small aliquots to prevent freeze-thaw cycles.

**Precautions**

Cleavage stimulation factor 2 (CSTF2) Antibody (N-term) is for research use only and not for use in diagnostic or therapeutic procedures.

**Cleavage stimulation factor 2 (CSTF2) Antibody (N-term) - Protein Information****Name** CSTF2

**Function** One of the multiple factors required for polyadenylation and 3'-end cleavage of mammalian pre-mRNAs. This subunit is directly involved in the binding to pre-mRNAs (By similarity).

**Cellular Location**

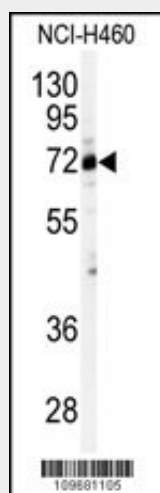
Nucleus. Note=Localized with DDX1 in cleavage bodies

**Cleavage stimulation factor 2 (CSTF2) Antibody (N-term) - Protocols**

Provided below are standard protocols that you may find useful for product applications.

- [Western Blot](#)
- [Blocking Peptides](#)
- [Dot Blot](#)
- [Immunohistochemistry](#)
- [Immunofluorescence](#)
- [Immunoprecipitation](#)
- [Flow Cytometry](#)
- [Cell Culture](#)

**Cleavage stimulation factor 2 (CSTF2) Antibody (N-term) - Images**



Western blot analysis of anti-CSTF2 Antibody (N-term) (Cat.#AP1942a) in NCI-H460 cell line lysates (35ug/lane). CSTF2(arrow) was detected using the purified Pab.

**Cleavage stimulation factor 2 (CSTF2) Antibody (N-term) - Background**

CSTF2 is one of three (including CSTF1 and CSTF3) cleavage stimulation factors which combine to form CSTF which is involved in the polyadenylation and 3'end cleavage of pre-mRNAs. CSTF2 contains a ribonucleoprotein-type RNA binding domain. CSTF2 is upregulated during activation of B cells which results in the switch of IgM heavy chain mRNA from membrane bound form to the secreted form.

**Cleavage stimulation factor 2 (CSTF2) Antibody (N-term) - References**

Takagaki, Y., et al., Mol. Cell 2(6):761-771 (1998).  
Martincic, K., et al., Proc. Natl. Acad. Sci. U.S.A. 95(19):11095-11100 (1998).  
Takagaki, Y., et al., Cell 87(5):941-952 (1996).

Takagaki, Y., et al., Nature 372(6505):471-474 (1994).

Takagaki, Y., et al., Proc. Natl. Acad. Sci. U.S.A. 89(4):1403-1407 (1992).