

**RGS13 Antibody(Center)**  
**Affinity Purified Rabbit Polyclonal Antibody (Pab)**  
**Catalog # AP19453c****Specification**

---

**RGS13 Antibody(Center) - Product Information**

Application	WB,E
Primary Accession	<a href="#">O14921</a>
Other Accession	<a href="#">NP_658912.1</a>
Reactivity	Human
Host	Rabbit
Clonality	Polyclonal
Isotype	Rabbit IgG
Calculated MW	19135
Antigen Region	61-90

**RGS13 Antibody(Center) - Additional Information****Gene ID** 6003**Other Names**

Regulator of G-protein signaling 13, RGS13, RGS13

**Target/Specificity**

This RGS13 antibody is generated from rabbits immunized with a KLH conjugated synthetic peptide between 61-90 amino acids from the Central region of human RGS13.

**Dilution**

WB~~1:1000

**Format**

Purified polyclonal antibody supplied in PBS with 0.09% (W/V) sodium azide. This antibody is purified through a protein A column, followed by peptide affinity purification.

**Storage**

Maintain refrigerated at 2-8°C for up to 2 weeks. For long term storage store at -20°C in small aliquots to prevent freeze-thaw cycles.

**Precautions**

RGS13 Antibody(Center) is for research use only and not for use in diagnostic or therapeutic procedures.

**RGS13 Antibody(Center) - Protein Information****Name** RGS13

**Function** Inhibits signal transduction by increasing the GTPase activity of G protein alpha subunits thereby driving them into their inactive GDP-bound form. Binds to both G(i)-alpha and G(q)-alpha

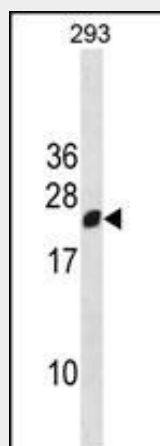
(By similarity).

### RGS13 Antibody(Center) - Protocols

Provided below are standard protocols that you may find useful for product applications.

- [Western Blot](#)
- [Blocking Peptides](#)
- [Dot Blot](#)
- [Immunohistochemistry](#)
- [Immunofluorescence](#)
- [Immunoprecipitation](#)
- [Flow Cytometry](#)
- [Cell Culture](#)

### RGS13 Antibody(Center) - Images



RGS13 Antibody (Center) (Cat. #AP19453c) western blot analysis in 293 cell line lysates (35ug/lane). This demonstrates the RGS13 antibody detected the RGS13 protein (arrow).

### RGS13 Antibody(Center) - Background

The protein encoded by this gene is a member of the regulator of G protein signaling (RGS) family. RGS family members share similarity with *S. cerevisiae* SST2 and *C. elegans* egl-10 proteins, which contain a characteristic conserved RGS domain. RGS proteins accelerate GTPase activity of G protein alpha-subunits, thereby driving G protein into their inactive GDP-bound form, thus negatively regulating G protein signaling. RGS proteins have been implicated in the fine tuning of a variety of cellular events in response to G protein-coupled receptor activation. The biological function of this gene, however, is unknown. Two transcript variants encoding the same isoform exist.

### RGS13 Antibody(Center) - References

Wang, J., et al. Carcinogenesis 31(10):1755-1761(2010)  
Pinheiro, A.P., et al. Am. J. Med. Genet. B Neuropsychiatr. Genet. 153B (5), 1070-1080 (2010) :  
Bansal, G., et al. J. Immunol. 181(11):7882-7890(2008)  
Han, J.I., et al. J. Leukoc. Biol. 79(6):1357-1368(2006)

Islam, T.C., et al. Leukemia 17(9):1880-1890(2003)