

GUCA1B Antibody(N-term)
Affinity Purified Rabbit Polyclonal Antibody (Pab)
Catalog # AP19456a**Specification**

GUCA1B Antibody(N-term) - Product Information

Application	WB,E
Primary Accession	O9UMX6
Other Accession	NP_002089.4
Reactivity	Human
Host	Rabbit
Clonality	Polyclonal
Isotype	Rabbit IgG
Calculated MW	23420
Antigen Region	29-57

GUCA1B Antibody(N-term) - Additional Information**Gene ID** 2979**Other Names**

Guanylyl cyclase-activating protein 2, GCAP 2, Guanylate cyclase activator 1B, GUCA1B, GCAP2

Target/Specificity

This GUCA1B antibody is generated from rabbits immunized with a KLH conjugated synthetic peptide between 29-57 amino acids from the N-terminal region of human GUCA1B.

Dilution

WB~~1:1000

Format

Purified polyclonal antibody supplied in PBS with 0.09% (W/V) sodium azide. This antibody is purified through a protein A column, followed by peptide affinity purification.

Storage

Maintain refrigerated at 2-8°C for up to 2 weeks. For long term storage store at -20°C in small aliquots to prevent freeze-thaw cycles.

Precautions

GUCA1B Antibody(N-term) is for research use only and not for use in diagnostic or therapeutic procedures.

GUCA1B Antibody(N-term) - Protein Information**Name** GUCA1B**Synonyms** GCAP2

Function Stimulates two retinal guanylyl cyclases (GCs) GUCY2D and GUCY2F when free calcium ions concentration is low, and inhibits GUCY2D and GUCY2F when free calcium ions concentration is elevated (By similarity). This Ca^{2+} -sensitive regulation of GCs is a key event in recovery of the dark state of rod photoreceptors following light exposure (By similarity). May be involved in cone photoreceptor response and recovery of response in bright light (By similarity).

Cellular Location

Cell membrane {ECO:0000250|UniProtKB:P51177}; Lipid-anchor {ECO:0000250|UniProtKB:P51177}. Photoreceptor inner segment. Cell projection, cilium, photoreceptor outer segment Note=Subcellular location is not affected by light or dark conditions {ECO:0000250|UniProtKB:Q8VBV8}

Tissue Location

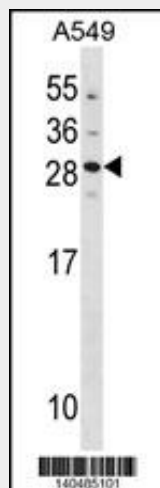
In the retina, it is expressed in cone and rod photoreceptor cells.

GUCA1B Antibody(N-term) - Protocols

Provided below are standard protocols that you may find useful for product applications.

- [Western Blot](#)
- [Blocking Peptides](#)
- [Dot Blot](#)
- [Immunohistochemistry](#)
- [Immunofluorescence](#)
- [Immunoprecipitation](#)
- [Flow Cytometry](#)
- [Cell Culture](#)

GUCA1B Antibody(N-term) - Images



GUCA1B Antibody (N-term) (Cat. #AP19456a) western blot analysis in A549 cell line lysates (35ug/lane). This demonstrates the GUCA1B antibody detected the GUCA1B protein (arrow).

GUCA1B Antibody(N-term) - Background

The protein encoded by this gene is a calcium-binding protein that activates photoreceptor guanylate cyclases. This gene may have arisen due to a gene duplication event since there is a highly similar gene clustered with it on chromosome 6. Mutations in

this gene can cause a form of retinitis pigmentosa. [provided by RefSeq].

GUCA1B Antibody(N-term) - References

Sato, M., et al. Graefes Arch. Clin. Exp. Ophthalmol. 243(3):235-242(2005)
Nishiguchi, K.M., et al. Invest. Ophthalmol. Vis. Sci. 45(11):3863-3870(2004)
Mungall, A.J., et al. Nature 425(6960):805-811(2003)
Wistow, G., et al. Mol. Vis. 8, 196-204 (2002) :
Zhang, Q.J., et al. Yi Chuan 24(1):19-21(2002)