

ESR2 Antibody(C-term)
Affinity Purified Rabbit Polyclonal Antibody (Pab)
Catalog # AP19499b**Specification**

ESR2 Antibody(C-term) - Product Information

Application	WB,E
Primary Accession	Q92731
Other Accession	Q9XSB5 , NP_001035365.1 , Q9TU15
Reactivity	Human
Predicted	Bovine, Sheep
Host	Rabbit
Clonality	Polyclonal
Isotype	Rabbit IgG
Calculated MW	59216
Antigen Region	451-480

ESR2 Antibody(C-term) - Additional Information**Gene ID** 2100**Other Names**

Estrogen receptor beta, ER-beta, Nuclear receptor subfamily 3 group A member 2, ESR2, ESTRB, NR3A2

Target/Specificity

This ESR2 antibody is generated from rabbits immunized with a KLH conjugated synthetic peptide between 451-480 amino acids from the C-terminal region of human ESR2.

Dilution

WB~~1:1000

Format

Purified polyclonal antibody supplied in PBS with 0.09% (W/V) sodium azide. This antibody is purified through a protein A column, followed by peptide affinity purification.

Storage

Maintain refrigerated at 2-8°C for up to 2 weeks. For long term storage store at -20°C in small aliquots to prevent freeze-thaw cycles.

Precautions

ESR2 Antibody(C-term) is for research use only and not for use in diagnostic or therapeutic procedures.

ESR2 Antibody(C-term) - Protein Information**Name** ESR2

Synonyms ESRB, NR3A2

Function Nuclear hormone receptor. Binds estrogens with an affinity similar to that of ESR1/ER-alpha, and activates expression of reporter genes containing estrogen response elements (ERE) in an estrogen- dependent manner (PubMed:[20074560](#)).

Cellular Location

Nucleus {ECO:0000255|PROSITE-ProRule:PRU00407, ECO:0000269|PubMed:19126643, ECO:0000269|PubMed:20074560}

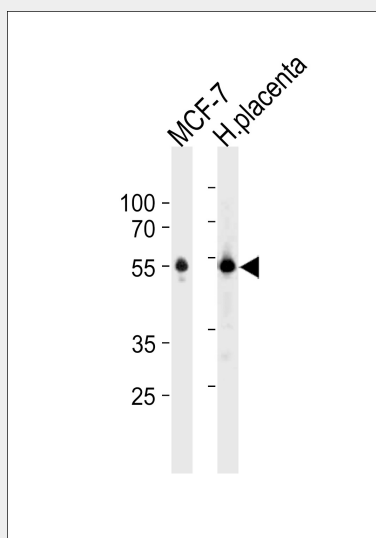
Tissue Location

[Isoform 1]: Expressed in testis and ovary, and at a lower level in heart, brain, placenta, liver, skeletal muscle, spleen, thymus, prostate, colon, bone marrow, mammary gland and uterus Also found in uterine bone, breast, and ovarian tumor cell lines, but not in colon and liver tumors. [Isoform 4]: Expressed in the testis. [Isoform 6]: Expressed in testis, placenta, skeletal muscle, spleen and leukocytes, and at a lower level in heart, lung, liver, kidney, pancreas, thymus, prostate, colon, small intestine, bone marrow, mammary gland and uterus. Not expressed in brain.

ESR2 Antibody(C-term) - Protocols

Provided below are standard protocols that you may find useful for product applications.

- [Western Blot](#)
- [Blocking Peptides](#)
- [Dot Blot](#)
- [Immunohistochemistry](#)
- [Immunofluorescence](#)
- [Immunoprecipitation](#)
- [Flow Cytometry](#)
- [Cell Culture](#)

ESR2 Antibody(C-term) - Images

ESR2 Antibody (C-term) (Cat. #AP19499b) western blot analysis in MCF-7 cell line and human placenta tissue lysates (35ug/lane). This demonstrates the ESR2 antibody detected the ESR2 protein (arrow).

ESR2 Antibody(C-term) - Background

This gene encodes a member of the family of estrogen receptors and superfamily of nuclear receptor transcription factors. The gene product contains an N-terminal DNA binding domain and C-terminal ligand binding domain and is localized to the nucleus, cytoplasm, and mitochondria. Upon binding to 17beta-estradiol or related ligands, the encoded protein forms homo- or hetero-dimers that interact with specific DNA sequences to activate transcription. Some isoforms dominantly inhibit the activity of other estrogen receptor family members. Several alternatively spliced transcript variants of this gene have been described, but the full-length nature of some of these variants has not been fully characterized.

ESR2 Antibody(C-term) - References

Fang, Y.J., et al. Tumour Biol. 31(6):651-658(2010) Hayes, D.F., et al. Clin. Pharmacol. Ther. 88(5):626-629(2010) Romero, R., et al. Am. J. Obstet. Gynecol. 203 (4), 361 (2010) : Wurster, M., et al. Oncol. Rep. 24(3):653-659(2010) Paulus, J.K., et al. Lung Cancer (2010) In press :