

GABRR1 Antibody(N-term)
Affinity Purified Rabbit Polyclonal Antibody (Pab)
Catalog # AP19525A**Specification**

GABRR1 Antibody(N-term) - Product Information

Application	WB,E
Primary Accession	P24046
Other Accession	NP_002033.2
Reactivity	Human
Host	Rabbit
Clonality	Polyclonal
Isotype	Rabbit IgG
Calculated MW	55883
Antigen Region	19-48

GABRR1 Antibody(N-term) - Additional Information**Gene ID** 2569**Other Names**

Gamma-aminobutyric acid receptor subunit rho-1, GABA(A) receptor subunit rho-1, GABA(C) receptor, GABRR1

Target/Specificity

This GABRR1 antibody is generated from rabbits immunized with a KLH conjugated synthetic peptide between 19-48 amino acids from the N-terminal region of human GABRR1.

Dilution

WB~~1:1000

Format

Purified polyclonal antibody supplied in PBS with 0.09% (W/V) sodium azide. This antibody is purified through a protein A column, followed by peptide affinity purification.

Storage

Maintain refrigerated at 2-8°C for up to 2 weeks. For long term storage store at -20°C in small aliquots to prevent freeze-thaw cycles.

Precautions

GABRR1 Antibody(N-term) is for research use only and not for use in diagnostic or therapeutic procedures.

GABRR1 Antibody(N-term) - Protein Information**Name** GABRR1**Function** GABA, the major inhibitory neurotransmitter in the vertebrate brain, mediates neuronal

inhibition by binding to the GABA/benzodiazepine receptor and opening an integral chloride channel. Rho-1 GABA receptor could play a role in retinal neurotransmission.

Cellular Location

Postsynaptic cell membrane; Multi-pass membrane protein. Cell membrane; Multi-pass membrane protein

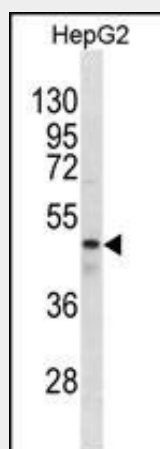
Tissue Location

Highly expressed in the retina and in a lesser extent in brain, lung and thymus

GABRR1 Antibody(N-term) - Protocols

Provided below are standard protocols that you may find useful for product applications.

- [Western Blot](#)
- [Blocking Peptides](#)
- [Dot Blot](#)
- [Immunohistochemistry](#)
- [Immunofluorescence](#)
- [Immunoprecipitation](#)
- [Flow Cytometry](#)
- [Cell Culture](#)

GABRR1 Antibody(N-term) - Images

GABRR1 Antibody (N-term) (Cat. #AP19525a) western blot analysis in HepG2 cell line lysates (35ug/lane). This demonstrates the GABRR1 antibody detected the GABRR1 protein (arrow).

GABRR1 Antibody(N-term) - Background

GABA is the major inhibitory neurotransmitter in the mammalian brain where it acts at GABA receptors, which are ligand-gated chloride channels. GABRR1 is a member of the rho subunit family.

GABRR1 Antibody(N-term) - References

Pinheiro, A.P., et al. Am. J. Med. Genet. B Neuropsychiatr. Genet. 153B (5), 1070-1080 (2010) :
Green, E.K., et al. Am. J. Med. Genet. B Neuropsychiatr. Genet. (2010) In press :
Reyes-Ruiz, J.M., et al. Biochim. Biophys. Acta 1798(5):1002-1007(2010)

Xuei, X., et al. Am. J. Med. Genet. B Neuropsychiatr. Genet. 153B (2), 418-427 (2010) :
Kang, J.Q., et al. Trends Mol Med 15(9):430-438(2009)