

**OR2A12 Antibody(C-term)**  
**Affinity Purified Rabbit Polyclonal Antibody (Pab)**  
**Catalog # AP19569b**

**Specification**

---

**OR2A12 Antibody(C-term) - Product Information**

Application	WB,E
Primary Accession	<a href="#">Q8NGT7</a>
Other Accession	<a href="#">NP_001004135.1</a>
Reactivity	Human
Host	Rabbit
Clonality	Polyclonal
Isotype	Rabbit IgG
Calculated MW	35213
Antigen Region	243-271

**OR2A12 Antibody(C-term) - Additional Information**

**Gene ID** 346525

**Other Names**

Olfactory receptor 2A12, Olfactory receptor OR7-10, OR2A12, OR2A12P

**Target/Specificity**

This OR2A12 antibody is generated from rabbits immunized with a KLH conjugated synthetic peptide between 243-271 amino acids from the C-terminal region of human OR2A12.

**Dilution**

WB~~1:1000

**Format**

Purified polyclonal antibody supplied in PBS with 0.09% (W/V) sodium azide. This antibody is purified through a protein A column, followed by peptide affinity purification.

**Storage**

Maintain refrigerated at 2-8°C for up to 2 weeks. For long term storage store at -20°C in small aliquots to prevent freeze-thaw cycles.

**Precautions**

OR2A12 Antibody(C-term) is for research use only and not for use in diagnostic or therapeutic procedures.

**OR2A12 Antibody(C-term) - Protein Information**

**Name** OR2A12

**Synonyms** OR2A12P

**Function** Odorant receptor.

**Cellular Location**

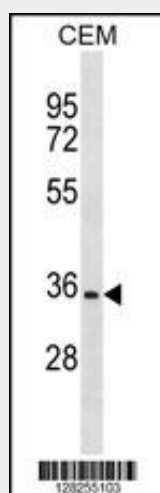
Cell membrane; Multi-pass membrane protein.

**OR2A12 Antibody(C-term) - Protocols**

Provided below are standard protocols that you may find useful for product applications.

- [Western Blot](#)
- [Blocking Peptides](#)
- [Dot Blot](#)
- [Immunohistochemistry](#)
- [Immunofluorescence](#)
- [Immunoprecipitation](#)
- [Flow Cytometry](#)
- [Cell Culture](#)

**OR2A12 Antibody(C-term) - Images**



OR2A12 Antibody (C-term) (Cat. #AP19569b) western blot analysis in CEM cell line lysates (35ug/lane). This demonstrates the OR2A12 antibody detected the OR2A12 protein (arrow).

**OR2A12 Antibody(C-term) - Background**

Olfactory receptors interact with odorant molecules in the nose, to initiate a neuronal response that triggers the perception of a smell. The olfactory receptor proteins are members of a large family of G-protein-coupled receptors (GPCR) arising from single coding-exon genes. Olfactory receptors share a 7-transmembrane domain structure with many neurotransmitter and hormone receptors and are responsible for the recognition and G protein-mediated transduction of odorant signals. The olfactory receptor gene family is the largest in the genome. The nomenclature assigned to the olfactory receptor genes and proteins for this organism is independent of other organisms.

**OR2A12 Antibody(C-term) - References**

Malnic, B., et al. Proc. Natl. Acad. Sci. U.S.A. 101(8):2584-2589(2004)  
Gilad, Y., et al. Mol. Biol. Evol. 20(3):307-314(2003)  
Fuchs, T., et al. Genomics 80(3):295-302(2002)