

**SRRM3 Antibody(Center)**  
**Affinity Purified Rabbit Polyclonal Antibody (Pab)**  
**Catalog # AP19628c****Specification**

---

**SRRM3 Antibody(Center) - Product Information**

Application	WB,E
Primary Accession	<a href="#">A6NNA2</a>
Reactivity	Human, Mouse
Host	Rabbit
Clonality	Polyclonal
Isotype	Rabbit IgG
Calculated MW	65249
Antigen Region	264-291

**SRRM3 Antibody(Center) - Additional Information****Other Names**

Serine/arginine repetitive matrix protein 3, SRRM3

**Target/Specificity**

This SRRM3 antibody is generated from rabbits immunized with a KLH conjugated synthetic peptide between 264-291 amino acids from the Central region of human SRRM3.

**Dilution**

WB~~1:1000

**Format**

Purified polyclonal antibody supplied in PBS with 0.09% (W/V) sodium azide. This antibody is purified through a protein A column, followed by peptide affinity purification.

**Storage**

Maintain refrigerated at 2-8°C for up to 2 weeks. For long term storage store at -20°C in small aliquots to prevent freeze-thaw cycles.

**Precautions**

SRRM3 Antibody(Center) is for research use only and not for use in diagnostic or therapeutic procedures.

**SRRM3 Antibody(Center) - Protein Information****Name** SRRM3

**Function** May play a role in regulating breast cancer cell invasiveness (PubMed:[26053433](#)). May be involved in RYBP-mediated breast cancer progression (PubMed:[27748911](#)).

**Tissue Location**

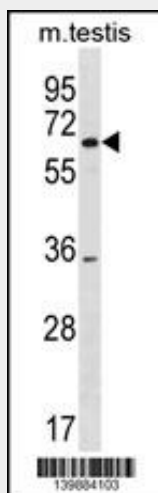
Expressed in breast cancer cell lines.

### SRRM3 Antibody(Center) - Protocols

Provided below are standard protocols that you may find useful for product applications.

- [Western Blot](#)
- [Blocking Peptides](#)
- [Dot Blot](#)
- [Immunohistochemistry](#)
- [Immunofluorescence](#)
- [Immunoprecipitation](#)
- [Flow Cytometry](#)
- [Cell Culture](#)

### SRRM3 Antibody(Center) - Images



SRRM3 Antibody (Center) (Cat. #AP19628c) western blot analysis in mouse testis tissue lysates (35ug/lane). This demonstrates the SRRM3 antibody detected the SRRM3 protein (arrow).

### SRRM3 Antibody(Center) - Background

The function of this protein remains unknown.