

**Mouse Fgf8 Antibody(N-term)**  
**Affinity Purified Rabbit Polyclonal Antibody (Pab)**  
**Catalog # AP19631a**

**Specification**

---

**Mouse Fgf8 Antibody(N-term) - Product Information**

Application	WB,E
Primary Accession	<a href="#">P37237</a>
Other Accession	<a href="#">NP_001159834.1</a>
Reactivity	Mouse
Host	Rabbit
Clonality	Polyclonal
Isotype	Rabbit IgG
Calculated MW	30420
Antigen Region	30-59

**Mouse Fgf8 Antibody(N-term) - Additional Information**

**Gene ID** 14179

**Other Names**

Fibroblast growth factor 8, FGF-8, Androgen-induced growth factor, AIGF, Heparin-binding growth factor 8, HBGF-8, Fgf8, Aigf

**Target/Specificity**

This Mouse Fgf8 antibody is generated from rabbits immunized with a KLH conjugated synthetic peptide between 30-59 amino acids from the N-terminal region of mouse Fgf8.

**Dilution**

WB~~1:1000

**Format**

Purified polyclonal antibody supplied in PBS with 0.09% (W/V) sodium azide. This antibody is purified through a protein A column, followed by peptide affinity purification.

**Storage**

Maintain refrigerated at 2-8°C for up to 2 weeks. For long term storage store at -20°C in small aliquots to prevent freeze-thaw cycles.

**Precautions**

Mouse Fgf8 Antibody(N-term) is for research use only and not for use in diagnostic or therapeutic procedures.

**Mouse Fgf8 Antibody(N-term) - Protein Information**

**Name** Fgf8

**Synonyms** Aigf

**Function** Plays an important role in the regulation of embryonic development, cell proliferation, cell differentiation and cell migration. Required for normal brain, eye, ear and limb development during embryogenesis. Required for normal development of the gonadotropin-releasing hormone (GnRH) neuronal system. Plays a role in neurite outgrowth in hippocampal cells (By similarity). Cooperates with Wnt-1 in mouse mammary tumor virus-induced murine mammary tumorigenesis (PubMed:[7884899](#)).

#### **Cellular Location**

Secreted.

#### **Tissue Location**

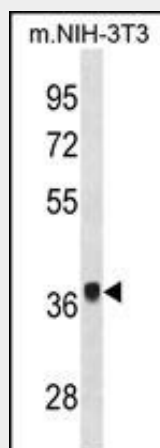
Absent in normal mammary glands and detected only in adult testis and ovary and in midgestational embryos

### **Mouse Fgf8 Antibody(N-term) - Protocols**

Provided below are standard protocols that you may find useful for product applications.

- [Western Blot](#)
- [Blocking Peptides](#)
- [Dot Blot](#)
- [Immunohistochemistry](#)
- [Immunofluorescence](#)
- [Immunoprecipitation](#)
- [Flow Cytometry](#)
- [Cell Culture](#)

### **Mouse Fgf8 Antibody(N-term) - Images**



Mouse Fgf8 Antibody (N-term) (Cat. #AP19631a) western blot analysis in mouse NIH-3T3 cell line lysates (35ug/lane). This demonstrates the Mouse Fgf8 antibody detected the Mouse Fgf8 protein (arrow).

### **Mouse Fgf8 Antibody(N-term) - Background**

Stimulates growth of the cells in an autocrine manner. Mediates hormonal action on the growth of cancer cells. Cooperates with Wnt-1 in mouse mammary tumor virus-induced murine mammary tumorigenesis.

### **Mouse Fgf8 Antibody(N-term) - References**

Yu, S., et al. Dev. Biol. 347(1):92-108(2010)  
Toyoda, R., et al. Development 137(20):3439-3448(2010)  
Leung, A.W., et al. Dev. Dyn. 239(9):2319-2329(2010)  
Mao, J., et al. Development 137(18):3079-3088(2010)  
Mitsiadis, T.A., et al. Development 137(18):3025-3035(2010)