

MYL12B Antibody(N-term)
Affinity Purified Rabbit Polyclonal Antibody (Pab)
Catalog # AP19667a**Specification**

MYL12B Antibody(N-term) - Product Information

Application	WB,E
Primary Accession	O14950
Other Accession	P18666 , Q3THE2 , NP_001138416.1
Reactivity	Human
Predicted	Mouse, Rat
Host	Rabbit
Clonality	Polyclonal
Isotype	Rabbit IgG
Calculated MW	19779
Antigen Region	1-30

MYL12B Antibody(N-term) - Additional Information**Gene ID** 103910;10627**Other Names**

Myosin regulatory light chain 12B, MLC-2A, MLC-2, Myosin regulatory light chain 2-B, smooth muscle isoform, Myosin regulatory light chain 20 kDa, MLC20, Myosin regulatory light chain MRLC2, SHUJUN-1, MYL12B, MRLC2, MYLC2B

Target/Specificity

This MYL12B antibody is generated from rabbits immunized with a KLH conjugated synthetic peptide between 1-30 amino acids from the N-terminal region of human MYL12B.

Dilution

WB~~1:1000

Format

Purified polyclonal antibody supplied in PBS with 0.09% (W/V) sodium azide. This antibody is purified through a protein A column, followed by peptide affinity purification.

Storage

Maintain refrigerated at 2-8°C for up to 2 weeks. For long term storage store at -20°C in small aliquots to prevent freeze-thaw cycles.

Precautions

MYL12B Antibody(N-term) is for research use only and not for use in diagnostic or therapeutic procedures.

MYL12B Antibody(N-term) - Protein Information**Name** MYL12B

Synonyms MRLC2, MYLC2B

Function Myosin regulatory subunit that plays an important role in regulation of both smooth muscle and nonmuscle cell contractile activity via its phosphorylation. Phosphorylation triggers actin polymerization in vascular smooth muscle. Implicated in cytokinesis, receptor capping, and cell locomotion.

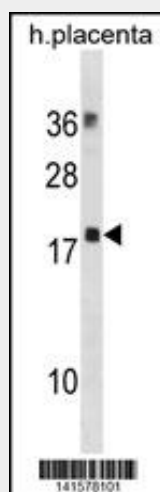
Tissue Location

Ubiquitously expressed in various hematopoietic cells.

MYL12B Antibody(N-term) - Protocols

Provided below are standard protocols that you may find useful for product applications.

- [Western Blot](#)
- [Blocking Peptides](#)
- [Dot Blot](#)
- [Immunohistochemistry](#)
- [Immunofluorescence](#)
- [Immunoprecipitation](#)
- [Flow Cytometry](#)
- [Cell Culture](#)

MYL12B Antibody(N-term) - Images

MYL12B Antibody (N-term) (Cat. #AP19667a) western blot analysis in human placenta tissue lysates (35ug/lane). This demonstrates the MYL12B antibody detected the MYL12B protein (arrow).

MYL12B Antibody(N-term) - Background

The activity of nonmuscle myosin II (see MYH9; MIM 160775) is regulated by phosphorylation of a regulatory light chain, such as MRLC2. This phosphorylation results in higher MgATPase activity and the assembly of myosin II filaments (Iwasaki et al., 2001 [PubMed 11942626]).

MYL12B Antibody(N-term) - References

Martins-de-Souza, D., et al. Eur Arch Psychiatry Clin Neurosci 259(3):151-163(2009)

Umeda, D., et al. Biochem. Biophys. Res. Commun. 333(2):628-635(2005)
Li, T.B., et al. Acta Biochim. Biophys. Sin. (Shanghai) 36(6):412-418(2004)
Webb, R.C. Adv Physiol Educ 27 (1-4), 201-206 (2003) :
Iwasaki, T., et al. Cell Struct. Funct. 26(6):677-683(2001)