

EOMES Antibody(N-term)
Affinity Purified Rabbit Polyclonal Antibody (Pab)
Catalog # AP19703a**Specification**

EOMES Antibody(N-term) - Product Information

Application	WB,E
Primary Accession	O95936
Other Accession	NP_005433.2
Reactivity	Human
Host	Rabbit
Clonality	Polyclonal
Isotype	Rabbit IgG
Calculated MW	72732
Antigen Region	28-57

EOMES Antibody(N-term) - Additional Information**Gene ID** 8320**Other Names**

Eomesodermin homolog, T-box brain protein 2, T-brain-2, TBR-2, EOMES, TBR2

Target/Specificity

This EOMES antibody is generated from rabbits immunized with a KLH conjugated synthetic peptide between 28-57 amino acids from the N-terminal region of human EOMES.

Dilution

WB~~1:1000

Format

Purified polyclonal antibody supplied in PBS with 0.09% (W/V) sodium azide. This antibody is purified through a protein A column, followed by peptide affinity purification.

Storage

Maintain refrigerated at 2-8°C for up to 2 weeks. For long term storage store at -20°C in small aliquots to prevent freeze-thaw cycles.

Precautions

EOMES Antibody(N-term) is for research use only and not for use in diagnostic or therapeutic procedures.

EOMES Antibody(N-term) - Protein Information**Name** EOMES**Synonyms** TBR2

Function Functions as a transcriptional activator playing a crucial role during development. Functions in trophoblast differentiation and later in gastrulation, regulating both mesoderm delamination and endoderm specification. Plays a role in brain development being required for the specification and the proliferation of the intermediate progenitor cells and their progeny in the cerebral cortex. Also involved in the differentiation of CD8+ T-cells during immune response regulating the expression of lytic effector genes.

Cellular Location

Nucleus.

Tissue Location

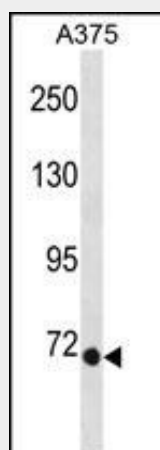
Expressed in CD8+ T-cells.

EOMES Antibody(N-term) - Protocols

Provided below are standard protocols that you may find useful for product applications.

- [Western Blot](#)
- [Blocking Peptides](#)
- [Dot Blot](#)
- [Immunohistochemistry](#)
- [Immunofluorescence](#)
- [Immunoprecipitation](#)
- [Flow Cytometry](#)
- [Cell Culture](#)

EOMES Antibody(N-term) - Images



EOMES Antibody (N-term) (Cat. #AP19703a) western blot analysis in A375 cell line lysates (35ug/lane). This demonstrates the EOMES antibody detected the EOMES protein (arrow).

EOMES Antibody(N-term) - Background

This gene encodes a member of a conserved protein family that shares a common DNA-binding domain, the T-box. T-box genes encode transcription factors involved in the regulation of developmental processes. A similar gene disrupted in mice is shown to be essential during trophoblast development and gastrulation.

EOMES Antibody(N-term) - References

Wang, H.T., et al. Xi Bao Yu Fen Zi Mian Yi Xue Za Zhi 26(1):31-34(2010)
Narayanan, S., et al. PLoS ONE 5 (5), E10636 (2010) :
D'Cruz, L.M., et al. Semin. Immunol. 21(2):92-98(2009)
Sessa, A., et al. Neuron 60(1):56-69(2008)
Araki, Y., et al. J. Immunol. 180(12):8102-8108(2008)