

NXT1 Antibody (C-term)
Affinity Purified Rabbit Polyclonal Antibody (Pab)
Catalog # AP19752b**Specification**

NXT1 Antibody (C-term) - Product Information

Application	WB,E
Primary Accession	O9UKK6
Other Accession	O9QZV9 , O2KIW0 , NP_037380.1
Reactivity	Mouse
Predicted	Bovine
Host	Rabbit
Clonality	Polyclonal
Isotype	Rabbit IgG
Calculated MW	15847
Antigen Region	85-111

NXT1 Antibody (C-term) - Additional Information**Gene ID** 29107**Other Names**

NTF2-related export protein 1, Protein p15, NXT1

Target/Specificity

This NXT1 antibody is generated from rabbits immunized with a KLH conjugated synthetic peptide between 85-111 amino acids from the C-terminal region of human NXT1.

Dilution

WB~~1:1000

Format

Purified polyclonal antibody supplied in PBS with 0.09% (W/V) sodium azide. This antibody is purified through a protein A column, followed by peptide affinity purification.

Storage

Maintain refrigerated at 2-8°C for up to 2 weeks. For long term storage store at -20°C in small aliquots to prevent freeze-thaw cycles.

Precautions

NXT1 Antibody (C-term) is for research use only and not for use in diagnostic or therapeutic procedures.

NXT1 Antibody (C-term) - Protein Information**Name** NXT1**Function** Stimulator of protein export for NES-containing proteins (PubMed:[10567585](#)). Also plays

a role in the nuclear export of U1 snRNA, tRNA, and mRNA (PubMed:[10848583](#)). The NXF1-NXT1 heterodimer is involved in the export of HSP70 mRNA in conjunction with ALYREF/THOC4 and THOC5 (PubMed:[19165146](#), PubMed:[11259602](#)).

Cellular Location

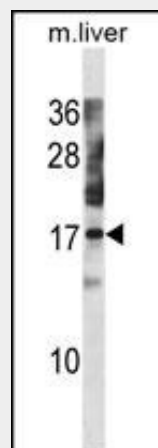
Nucleus. Nucleus speckle. Cytoplasm. Note=Shuttles between the nucleus and the cytoplasm

NXT1 Antibody (C-term) - Protocols

Provided below are standard protocols that you may find useful for product applications.

- [Western Blot](#)
- [Blocking Peptides](#)
- [Dot Blot](#)
- [Immunohistochemistry](#)
- [Immunofluorescence](#)
- [Immunoprecipitation](#)
- [Flow Cytometry](#)
- [Cell Culture](#)

NXT1 Antibody (C-term) - Images



NXT1 Antibody (C-term) (Cat. #AP19752b) western blot analysis in mouse liver tissue lysates (35ug/lane). This demonstrates the NXT1 antibody detected the NXT1 protein (arrow).

NXT1 Antibody (C-term) - Background

The protein encoded by this gene is located in the nuclear envelope. It has protein similarity to nuclear transport factor 2. This protein functions as a nuclear export factor in both RAN (Ras-related nuclear protein)- and CRM1 (required for chromosome region maintenance)-dependent pathways. It is found to stimulate the export of U1 snRNA in RAN- and CRM1-dependent pathways and the export of tRNA and mRNA in a CRM1-independent pathway. The encoded protein heterodimerizes with Tap protein and may regulate the ability of Tap protein to mediate nuclear mRNA export. The use of alternate polyadenylation sites has been found for this gene.

NXT1 Antibody (C-term) - References

Venkatesan, K., et al. Nat. Methods 6(1):83-90(2009)
Forler, D., et al. Nat. Biotechnol. 21(1):89-92(2003)
Katahira, J., et al. J. Biol. Chem. 277(11):9242-9246(2002)
Wiegand, H.L., et al. Mol. Cell. Biol. 22(1):245-256(2002)
Deloukas, P., et al. Nature 414(6866):865-871(2001)