

**CRYM Antibody (Center)**  
**Affinity Purified Rabbit Polyclonal Antibody (Pab)**  
**Catalog # AP19781c****Specification**

---

**CRYM Antibody (Center) - Product Information**

|                   |                             |
|-------------------|-----------------------------|
| Application       | WB,E                        |
| Primary Accession | <a href="#">Q14894</a>      |
| Other Accession   | <a href="#">NP_001879.1</a> |
| Reactivity        | Mouse                       |
| Host              | Rabbit                      |
| Clonality         | Polyclonal                  |
| Isotype           | Rabbit IgG                  |
| Calculated MW     | 33776                       |
| Antigen Region    | 154-183                     |

**CRYM Antibody (Center) - Additional Information****Gene ID** 1428**Other Names**

Ketimine reductase mu-crystallin, NADP-regulated thyroid-hormone-binding protein, CRYM, THBP

**Target/Specificity**

This CRYM antibody is generated from rabbits immunized with a KLH conjugated synthetic peptide between 154-183 amino acids from the Central region of human CRYM.

**Dilution**

WB~~1:1000

**Format**

Purified polyclonal antibody supplied in PBS with 0.09% (W/V) sodium azide. This antibody is purified through a protein A column, followed by peptide affinity purification.

**Storage**

Maintain refrigerated at 2-8°C for up to 2 weeks. For long term storage store at -20°C in small aliquots to prevent freeze-thaw cycles.

**Precautions**

CRYM Antibody (Center) is for research use only and not for use in diagnostic or therapeutic procedures.

**CRYM Antibody (Center) - Protein Information****Name** CRYM**Synonyms** THBP

**Function** Specifically catalyzes the reduction of imine bonds in brain substrates that may include cystathionine ketimine (CysK) and lanthionine ketimine (LK). Binds thyroid hormone which is a strong reversible inhibitor. Presumably involved in the regulation of the free intracellular concentration of triiodothyronine and access to its nuclear receptors.

**Cellular Location**

Cytoplasm.

**Tissue Location**

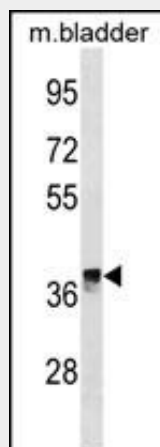
Expressed in neural tissue, muscle and kidney.

**CRYM Antibody (Center) - Protocols**

Provided below are standard protocols that you may find useful for product applications.

- [Western Blot](#)
- [Blocking Peptides](#)
- [Dot Blot](#)
- [Immunohistochemistry](#)
- [Immunofluorescence](#)
- [Immunoprecipitation](#)
- [Flow Cytometry](#)
- [Cell Culture](#)

**CRYM Antibody (Center) - Images**



CRYM Antibody (Center) (Cat. #AP19781c) western blot analysis in mouse bladder tissue lysates (35ug/lane). This demonstrates the CRYM antibody detected the CRYM protein (arrow).

**CRYM Antibody (Center) - Background**

Crystallins are separated into two classes: taxon-specific and ubiquitous. The former class is also called phylogenetically-restricted crystallins. The latter class constitutes the major proteins of vertebrate eye lens and maintains the transparency and refractive index of the lens. This gene encodes a taxon-specific crystallin protein that binds NADPH and has sequence similarity to bacterial ornithine cyclodeaminases. The encoded protein does not perform a structural role in lens tissue, and instead it binds thyroid hormone for possible regulatory or

developmental roles. Mutations in this gene have been associated with autosomal dominant non-syndromic deafness. Multiple alternatively spliced transcript variants have been found for this gene.

#### **CRYM Antibody (Center) - References**

Martins-de-Souza, D., et al. J Psychiatr Res (2010) In press :  
Al-Kafaji, G., et al. Biochem. Biophys. Res. Commun. 391(4):1585-1591(2010)  
Malinowska, K., et al. Prostate 69(10):1109-1118(2009)  
Martins-de-Souza, D., et al. J Psychiatr Res 43(11):978-986(2009)  
Martins-de-Souza, D., et al. Eur Arch Psychiatry Clin Neurosci 259(3):151-163(2009)