

**PRSSL1 Antibody(C-term)**  
**Affinity Purified Rabbit Polyclonal Antibody (Pab)**  
**Catalog # AP19873b**

**Specification**

---

**PRSSL1 Antibody(C-term) - Product Information**

|                   |   |
|-------------------|---|
| Application       | IF, WB, FC,E  |
| Primary Accession | <a href="#">Q6UWY2</a>  |
| Other Accession   | <a href="#">Q6IE59</a> , <a href="#">Q14B24</a> , <a href="#">NP_999875.1</a> |
| Reactivity        | Human   |
| Predicted         | Mouse, Rat  |
| Host              | Rabbit  |
| Clonality         | Polyclonal  |
| Isotype           | Rabbit IgG  |
| Antigen Region    | 225-254   |

**PRSSL1 Antibody(C-term) - Additional Information**

**Gene ID** 400668

**Other Names**

Serine protease 57, 3421-, Serine protease 1-like protein 1, PRSS57, PRSSL1

**Target/Specificity**

This PRSSL1 antibody is generated from rabbits immunized with a KLH conjugated synthetic peptide between 225-254 amino acids from the C-terminal region of human PRSSL1.

**Dilution**

IF~~1:25

WB~~1:2000

FC~~1:25

**Format**

Purified polyclonal antibody supplied in PBS with 0.09% (W/V) sodium azide. This antibody is purified through a protein A column, followed by peptide affinity purification.

**Storage**

Maintain refrigerated at 2-8°C for up to 2 weeks. For long term storage store at -20°C in small aliquots to prevent freeze-thaw cycles.

**Precautions**

PRSSL1 Antibody(C-term) is for research use only and not for use in diagnostic or therapeutic procedures.

**PRSSL1 Antibody(C-term) - Protein Information**

**Name** PRSS57

**Synonyms** PRSSL1

**Function** Serine protease that cleaves preferentially after Arg residues (PubMed:[22474388](#), PubMed:[23904161](#), PubMed:[25156428](#)). Can also cleave after citrulline (deiminated arginine) and methylarginine residues (PubMed:[25156428](#)).

**Cellular Location**

Cytoplasmic granule lumen. Secreted. Note=Stored in cytoplasmic granules and secreted as active enzyme in response to stimulation of neutrophils.

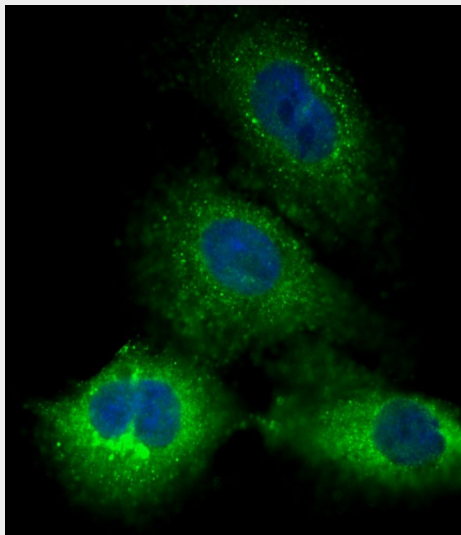
**Tissue Location**

Detected in peripheral blood neutrophil granulocytes, but not in other types of leukocytes. Detected in neutrophils and neutrophil precursors in bone marrow (at protein level) (PubMed:22474388, PubMed:23904161). Detected in myeloblasts and promyelocytes in bone marrow (PubMed:23904161)

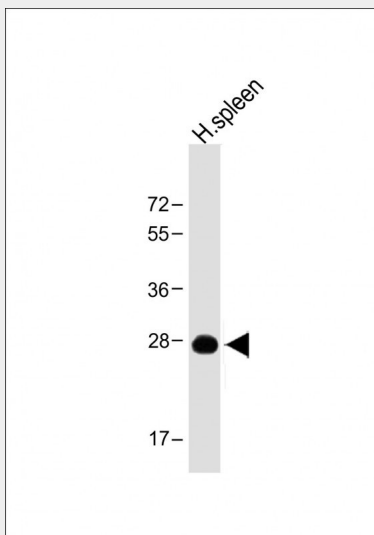
**PRSSL1 Antibody(C-term) - Protocols**

Provided below are standard protocols that you may find useful for product applications.

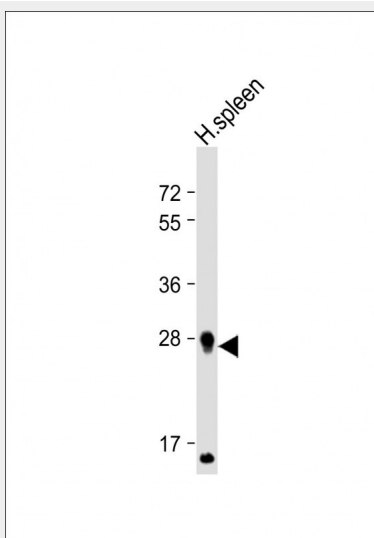
- [Western Blot](#)
- [Blocking Peptides](#)
- [Dot Blot](#)
- [Immunohistochemistry](#)
- [Immunofluorescence](#)
- [Immunoprecipitation](#)
- [Flow Cytometry](#)
- [Cell Culture](#)

**PRSSL1 Antibody(C-term) - Images**

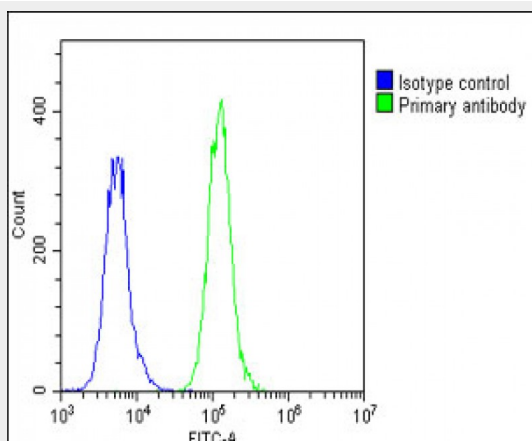
Immunofluorescent analysis of 4% paraformaldehyde-fixed, 0.1% Triton X-100 permeabilized A549 cells labeling PRSS57 with AP19873b at 1/25 dilution, followed by Dylight® 488-conjugated goat anti-Rabbit IgG (OH191631) secondary antibody at 1/200 dilution (green). Immunofluorescence image showing cytoplasm staining on A549 cell line. Cytoplasmic actin is detected with Dylight® 554 Phalloidin (1186255) at 1/500 dilution (red). The nuclear counter stain is DAPI (blue).



Anti-PRSSL1 Antibody (C-term) at 1:4000 dilution + Human spleen lysate Lysates/proteins at 20  $\mu$ g per lane. Secondary Goat Anti-Rabbit IgG, (H+L), Peroxidase conjugated at 1/10000 dilution. Predicted band size : 30 kDa Blocking/Dilution buffer: 5% NFDM/TBST.



Anti-PRSSL1 Antibody (C-term) at 1:2000 dilution + Human spleen lysate Lysates/proteins at 20  $\mu$ g per lane. Secondary Goat Anti-Rabbit IgG, (H+L), Peroxidase conjugated at 1/10000 dilution. Predicted band size : 30 kDa Blocking/Dilution buffer: 5% NFDM/TBST.



Overlay histogram showing A549 cells stained with AP19873b(green line). The cells were fixed with 2% paraformaldehyde (10 min) and then permeabilized with 90% methanol for 10 min. The cells were then incubated in 2% bovine serum albumin to block non-specific protein-protein interactions followed by the antibody (AP19873b, 1:25 dilution) for 60 min at 37°C. The secondary antibody used was Goat-Anti-Rabbit IgG, DyLight® 488 Conjugated Highly Cross-Adsorbed(1583138) at 1/200 dilution for 40 min at 37°C. Isotype control antibody (blue line) was rabbit IgG1 (1µg/1x10<sup>6</sup> cells) used under the same conditions. Acquisition of >10, 000 events was performed.

#### **PRSSL1 Antibody(C-term) - Background**

The function of this protein is unknown.

#### **PRSSL1 Antibody(C-term) - References**

Clark, H.F., et al. Genome Res. 13(10):2265-2270(2003)  
Polikoff, D., et al. Cytogenet. Cell Genet. 79 (1-2), 147-148 (1997) :