

CDH26 Antibody (C-term)
Affinity Purified Rabbit Polyclonal Antibody (Pab)
Catalog # AP19914B**Specification**

CDH26 Antibody (C-term) - Product Information

Application	WB,E
Primary Accession	Q8IXH8
Other Accession	NP_068582.2
Reactivity	Human
Host	Rabbit
Clonality	Polyclonal
Isotype	Rabbit IgG
Calculated MW	92416
Antigen Region	818-846

CDH26 Antibody (C-term) - Additional Information**Gene ID** 60437**Other Names**

Cadherin-like protein 26, Cadherin-like protein VR20, CDH26

Target/Specificity

This CDH26 antibody is generated from rabbits immunized with a KLH conjugated synthetic peptide between 818-846 amino acids from the C-terminal region of human CDH26.

Dilution

WB~~1:1000

Format

Purified polyclonal antibody supplied in PBS with 0.09% (W/V) sodium azide. This antibody is purified through a protein A column, followed by peptide affinity purification.

Storage

Maintain refrigerated at 2-8°C for up to 2 weeks. For long term storage store at -20°C in small aliquots to prevent freeze-thaw cycles.

Precautions

CDH26 Antibody (C-term) is for research use only and not for use in diagnostic or therapeutic procedures.

CDH26 Antibody (C-term) - Protein Information**Name** CDH26

Function Cadherins are calcium-dependent cell adhesion proteins. They preferentially interact with themselves in a homophilic manner in connecting cells; cadherins may thus contribute to the

sorting of heterogeneous cell types. Ligand for integrins alpha-E/beta-7, ITGAE:ITGAB7, alpha-4/beta-7, ITGA4:ITGAB7 and alpha-4/beta-1, ITGA4:ITGAB1 through which modulates CD4(+) T cells activation (PubMed:[28051089](#)).

Cellular Location

Cell membrane; Single-pass type I membrane protein

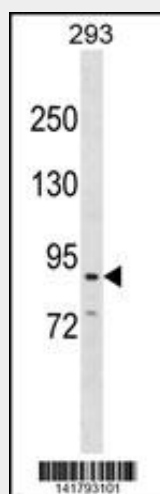
Tissue Location

Expressed by epithelial cells of gastrointestinal tissue.

CDH26 Antibody (C-term) - Protocols

Provided below are standard protocols that you may find useful for product applications.

- [Western Blot](#)
- [Blocking Peptides](#)
- [Dot Blot](#)
- [Immunohistochemistry](#)
- [Immunofluorescence](#)
- [Immunoprecipitation](#)
- [Flow Cytometry](#)
- [Cell Culture](#)

CDH26 Antibody (C-term) - Images

CDH26 Antibody (C-term) (Cat. #AP19914b) western blot analysis in 293 cell line lysates (35ug/lane). This demonstrates the CDH26 antibody detected the CDH26 protein (arrow).

CDH26 Antibody (C-term) - Background

Cadherins are a family of adhesion molecules that mediate Ca^{2+} -dependent cell-cell adhesion in all solid tissues and modulate a wide variety of processes, including cell polarization and migration. Cadherin domains occur as repeats in the extracellular region and are thought to contribute to the sorting of heterogeneous cell types and the maintenance of orderly structures such as epithelium. This gene encodes a cadherin domain-containing protein whose specific function has not yet been determined. Alternative splicing occurs at this locus and two transcript

variants, encoding distinct proteins, have been identified.

CDH26 Antibody (C-term) - References

Rose, J.E., et al. Mol. Med. 16 (7-8), 247-253 (2010) :
Ferreira, M.A., et al. Allergy 64(11):1623-1628(2009)
Deloukas, P., et al. Nature 414(6866):865-871(2001)
Nollet, F., et al. J. Mol. Biol. 299(3):551-572(2000)