

ADRA1B Antibody (C-term)
Affinity Purified Rabbit Polyclonal Antibody (Pab)
Catalog # AP19930b**Specification**

ADRA1B Antibody (C-term) - Product Information

| | |
|-------------------|---|
| Application | WB,E |
| Primary Accession | P35368 |
| Other Accession | P15823 , P97717 , NP_000670.1 |
| Reactivity | Human |
| Predicted | Mouse, Rat |
| Host | Rabbit |
| Clonality | Polyclonal |
| Isotype | Rabbit IgG |
| Calculated MW | 56836 |
| Antigen Region | 380-409 |

ADRA1B Antibody (C-term) - Additional Information**Gene ID** 147**Other Names**

Alpha-1B adrenergic receptor, Alpha-1B adrenoreceptor, Alpha-1B adrenoceptor, ADRA1B

Target/Specificity

This ADRA1B antibody is generated from rabbits immunized with a KLH conjugated synthetic peptide between 380-409 amino acids from the C-terminal region of human ADRA1B.

Dilution

WB~~1:1000

Format

Purified polyclonal antibody supplied in PBS with 0.09% (W/V) sodium azide. This antibody is purified through a protein A column, followed by peptide affinity purification.

Storage

Maintain refrigerated at 2-8°C for up to 2 weeks. For long term storage store at -20°C in small aliquots to prevent freeze-thaw cycles.

Precautions

ADRA1B Antibody (C-term) is for research use only and not for use in diagnostic or therapeutic procedures.

ADRA1B Antibody (C-term) - Protein Information**Name** ADRA1B**Function** This alpha-adrenergic receptor mediates its action by association with G proteins that

activate a phosphatidylinositol- calcium second messenger system. Its effect is mediated by G(q) and G(11) proteins. Nuclear ADRA1A-ADRA1B heterooligomers regulate phenylephrine (PE)-stimulated ERK signaling in cardiac myocytes.

Cellular Location

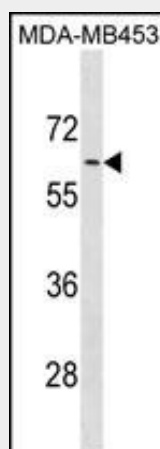
Nucleus membrane; Multi-pass membrane protein. Cell membrane; Multi-pass membrane protein. Cytoplasm Membrane, caveola. Note=Location at the nuclear membrane facilitates heterooligomerization and regulates ERK- mediated signaling in cardiac myocytes. signaling in cardiac myocytes Colocalizes with GNAQ, PLCB1 as well as LAP2 at the nuclear membrane of cardiac myocytes

ADRA1B Antibody (C-term) - Protocols

Provided below are standard protocols that you may find useful for product applications.

- [Western Blot](#)
- [Blocking Peptides](#)
- [Dot Blot](#)
- [Immunohistochemistry](#)
- [Immunofluorescence](#)
- [Immunoprecipitation](#)
- [Flow Cytometry](#)
- [Cell Culture](#)

ADRA1B Antibody (C-term) - Images



ADRA1B Antibody (C-term) (Cat. #AP19930b) western blot analysis in MDA-MB453 cell line lysates (35ug/lane). This demonstrates the ADRA1B antibody detected the ADRA1B protein (arrow).

ADRA1B Antibody (C-term) - Background

Alpha-1-adrenergic receptors (alpha-1-ARs) are members of the G protein-coupled receptor superfamily. They activate mitogenic responses and regulate growth and proliferation of many cells. There are 3 alpha-1-AR subtypes: alpha-1A, -1B and -1D, all of which signal through the Gq/11 family of G-proteins and different subtypes show different patterns of activation. This gene encodes alpha-1B-adrenergic receptor, which induces neoplastic transformation when transfected into NIH 3T3 fibroblasts and other

cell lines. Thus, this normal cellular gene is identified as a protooncogene. This gene comprises 2 exons and a single large intron of at least 20 kb that interrupts the coding region.

ADRA1B Antibody (C-term) - References

Bailey, S.D., et al. Diabetes Care 33(10):2250-2253(2010)
Pinheiro, A.P., et al. Am. J. Med. Genet. B Neuropsychiatr. Genet. 153B (5), 1070-1080 (2010) :
Rose, J.E., et al. Mol. Med. 16 (7-8), 247-253 (2010) :
Jensen, B.C., et al. Circ Heart Fail 2(6):654-663(2009)
Talmud, P.J., et al. Am. J. Hum. Genet. 85(5):628-642(2009)