

HTRA4 Antibody (Center)
Affinity Purified Rabbit Polyclonal Antibody (Pab)
Catalog # AP19935C**Specification**

HTRA4 Antibody (Center) - Product Information

Application	WB,E
Primary Accession	P83105
Other Accession	NP_710159.1
Reactivity	Human
Host	Rabbit
Clonality	Polyclonal
Isotype	Rabbit IgG
Antigen Region	283-311

HTRA4 Antibody (Center) - Additional Information**Gene ID** 203100**Other Names**

Serine protease HTRA4, 3421-, High-temperature requirement factor A4, HTRA4

Target/Specificity

This HTRA4 antibody is generated from rabbits immunized with a KLH conjugated synthetic peptide between 283-311 amino acids from the Central region of human HTRA4.

Dilution

WB~~1:1000

Format

Purified polyclonal antibody supplied in PBS with 0.09% (W/V) sodium azide. This antibody is purified through a protein A column, followed by peptide affinity purification.

Storage

Maintain refrigerated at 2-8°C for up to 2 weeks. For long term storage store at -20°C in small aliquots to prevent freeze-thaw cycles.

Precautions

HTRA4 Antibody (Center) is for research use only and not for use in diagnostic or therapeutic procedures.

HTRA4 Antibody (Center) - Protein Information**Name** HTRA4**Function** Serine protease.**Cellular Location**

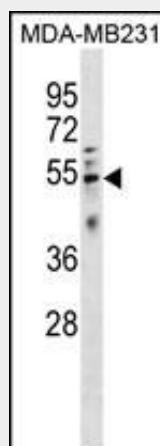
Secreted.

HTRA4 Antibody (Center) - Protocols

Provided below are standard protocols that you may find useful for product applications.

- [Western Blot](#)
- [Blocking Peptides](#)
- [Dot Blot](#)
- [Immunohistochemistry](#)
- [Immunofluorescence](#)
- [Immunoprecipitation](#)
- [Flow Cytometry](#)
- [Cell Culture](#)

HTRA4 Antibody (Center) - Images



HTRA4 Antibody (Center) (Cat. #AP19935c) western blot analysis in MDA-MB231 cell line lysates (35ug/lane). This demonstrates the HTRA4 antibody detected the HTRA4 protein (arrow).

HTRA4 Antibody (Center) - Background

This gene encodes a member of the HtrA family of proteases. The encoded protein contains a putative signal peptide, an insulin growth factor binding domain, a Kazal protease inhibitor domain, a conserved trypsin domain and a PDZ domain. Based on studies on other related family members, this enzyme may function as a secreted oligomeric chaperone protease to degrade misfolded secretory proteins. Other human HtrA proteins have been implicated in arthritis, tumor suppression, unfolded stress response, apoptosis, and aging.

HTRA4 Antibody (Center) - References

Clausen, T., et al. Mol. Cell 10(3):443-455(2002)