

PPM1F Antibody (Center)
Affinity Purified Rabbit Polyclonal Antibody (Pab)
Catalog # AP19968c

Specification

PPM1F Antibody (Center) - Product Information

Application	WB,E
Primary Accession	P49593
Other Accession	NP_055449.1
Reactivity	Human
Host	Rabbit
Clonality	Polyclonal
Isotype	Rabbit IgG
Calculated MW	49831
Antigen Region	275-303

PPM1F Antibody (Center) - Additional Information

Gene ID 9647

Other Names

Protein phosphatase 1F, Ca(2+)/calmodulin-dependent protein kinase phosphatase, CaM-kinase phosphatase, CaMKPase, Partner of PIX 2, Protein fem-2 homolog, hFem-2, PPM1F, KIAA0015, POPX2

Target/Specificity

This PPM1F antibody is generated from rabbits immunized with a KLH conjugated synthetic peptide between 275-303 amino acids from the Central region of human PPM1F.

Dilution

WB~~1:1000

Format

Purified polyclonal antibody supplied in PBS with 0.09% (W/V) sodium azide. This antibody is purified through a protein A column, followed by peptide affinity purification.

Storage

Maintain refrigerated at 2-8°C for up to 2 weeks. For long term storage store at -20°C in small aliquots to prevent freeze-thaw cycles.

Precautions

PPM1F Antibody (Center) is for research use only and not for use in diagnostic or therapeutic procedures.

PPM1F Antibody (Center) - Protein Information

Name PPM1F

Synonyms KIAA0015, POPX2

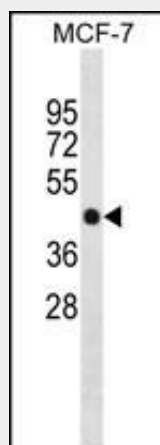
Function Dephosphorylates and concomitantly deactivates CaM-kinase II activated upon autophosphorylation, and CaM-kinases IV and I activated upon phosphorylation by CaM-kinase kinase. Promotes apoptosis.

PPM1F Antibody (Center) - Protocols

Provided below are standard protocols that you may find useful for product applications.

- [Western Blot](#)
- [Blocking Peptides](#)
- [Dot Blot](#)
- [Immunohistochemistry](#)
- [Immunofluorescence](#)
- [Immunoprecipitation](#)
- [Flow Cytometry](#)
- [Cell Culture](#)

PPM1F Antibody (Center) - Images



PPM1F Antibody (Center) (Cat. #AP19968c) western blot analysis in MCF-7 cell line lysates (35ug/lane). This demonstrates the PPM1F antibody detected the PPM1F protein (arrow).

PPM1F Antibody (Center) - Background

The protein encoded by this gene is a member of the PP2C family of Ser/Thr protein phosphatases. PP2C family members are known to be negative regulators of cell stress response pathways. This phosphatase can interact with Rho guanine nucleotide exchange factors (PIX), and thus block the effects of p21-activated kinase 1 (PAK), a protein kinase mediating biological effects downstream of Rho GTPases. Calcium/calmodulin-dependent protein kinase II gamma (CAMK2G/CAMK-II) is found to be one of the substrates of this phosphatase. The overexpression of this phosphatase or CAMK2G has been shown to mediate caspase-dependent apoptosis. An alternatively spliced transcript variant has been identified, but its full-length nature has not been determined.

PPM1F Antibody (Center) - References

Harvey, B.P., et al. J. Biol. Chem. 279(23):24889-24898(2004)
Koh, C.G., et al. Curr. Biol. 12(4):317-321(2002)
Tan, K.M., et al. J. Biol. Chem. 276(47):44193-44202(2001)
Kitani, T., et al. J. Biochem. 125(6):1022-1028(1999)