

**PCSK5 Antibody (N-term)**  
**Affinity Purified Rabbit Polyclonal Antibody (Pab)**  
**Catalog # AP19980a**

**Specification**

---

**PCSK5 Antibody (N-term) - Product Information**

Application	WB,E
Primary Accession	<a href="#">O92824</a>
Other Accession	<a href="#">NP_006191.2</a>
Reactivity	Human
Host	Rabbit
Clonality	Polyclonal
Isotype	Rabbit IgG
Calculated MW	206942
Antigen Region	95-124

**PCSK5 Antibody (N-term) - Additional Information**

**Gene ID** 5125

**Other Names**

Proprotein convertase subtilisin/kexin type 5, 3421-, Proprotein convertase 5, PC5, Proprotein convertase 6, PC6, hPC6, Subtilisin/kexin-like protease PC5, PCSK5, PC5, PC6

**Target/Specificity**

This PCSK5 antibody is generated from rabbits immunized with a KLH conjugated synthetic peptide between 95-124 amino acids from the N-terminal region of human PCSK5.

**Dilution**

WB~~1:1000

**Format**

Purified polyclonal antibody supplied in PBS with 0.09% (W/V) sodium azide. This antibody is purified through a protein A column, followed by peptide affinity purification.

**Storage**

Maintain refrigerated at 2-8°C for up to 2 weeks. For long term storage store at -20°C in small aliquots to prevent freeze-thaw cycles.

**Precautions**

PCSK5 Antibody (N-term) is for research use only and not for use in diagnostic or therapeutic procedures.

**PCSK5 Antibody (N-term) - Protein Information**

**Name** PCSK5

**Synonyms** PC5, PC6

**Function** Serine endoprotease that processes various proproteins by cleavage at paired basic amino acids, recognizing the RXXX[KR]R consensus motif. Likely functions in the constitutive and regulated secretory pathways. Plays an essential role in pregnancy establishment by proteolytic activation of a number of important factors such as BMP2, CALD1 and alpha-integrins.

**Cellular Location**

[Isoform PC6A]: Secreted. Note=Secreted through the regulated secretory pathway.

**Tissue Location**

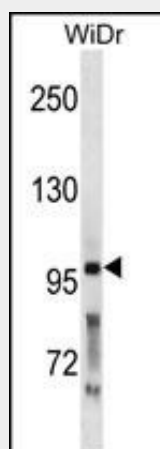
Expressed in T-lymphocytes.

**PCSK5 Antibody (N-term) - Protocols**

Provided below are standard protocols that you may find useful for product applications.

- [Western Blot](#)
- [Blocking Peptides](#)
- [Dot Blot](#)
- [Immunohistochemistry](#)
- [Immunofluorescence](#)
- [Immunoprecipitation](#)
- [Flow Cytometry](#)
- [Cell Culture](#)

**PCSK5 Antibody (N-term) - Images**



PCSK5 Antibody (N-term) (Cat. #AP19980a) western blot analysis in WiDr cell line lysates (35ug/lane). This demonstrates the PCSK5 antibody detected the PCSK5 protein (arrow).

**PCSK5 Antibody (N-term) - Background**

The protein encoded by this gene belongs to the subtilisin-like proprotein convertase family. The members of this family are proprotein convertases that process latent precursor proteins into their biologically active products. This encoded protein mediates posttranslational endoproteolytic processing for several integrin alpha subunits. It is thought to process prorenin, pro-membrane type-1 matrix metalloproteinase and HIV-1 glycoprotein gp160. Multiple transcript variants encoding different isoforms have been found for this gene.

**PCSK5 Antibody (N-term) - References**

Bailey, S.D., et al. Diabetes Care 33(10):2250-2253(2010)  
Heng, S., et al. Endocrinology 151(8):3909-3917(2010)  
Rose, J.E., et al. Mol. Med. 16 (7-8), 247-253 (2010) :  
Talmud, P.J., et al. Am. J. Hum. Genet. 85(5):628-642(2009)  
Iatán, I., et al. Circ Cardiovasc Genet 2(5):467-475(2009)