

FCRL3 Antibody (C-term)
Affinity Purified Rabbit Polyclonal Antibody (Pab)
Catalog # AP19988b**Specification**

FCRL3 Antibody (C-term) - Product Information

Application	WB,E
Primary Accession	Q96P31
Other Accession	NP_443171.2
Reactivity	Human
Host	Rabbit
Clonality	Polyclonal
Isotype	Rabbit IgG
Calculated MW	80856
Antigen Region	694-720

FCRL3 Antibody (C-term) - Additional Information**Gene ID** 115352**Other Names**

Fc receptor-like protein 3, FcR-like protein 3, FcRL3, Fc receptor homolog 3, FcRH3, IFGP family protein 3, hIFGP3, Immune receptor translocation-associated protein 3, SH2 domain-containing phosphatase anchor protein 2, CD307c, FCRL3, FCRH3, IFGP3, IRTA3, SPAP2

Target/Specificity

This FCRL3 antibody is generated from rabbits immunized with a KLH conjugated synthetic peptide between 694-720 amino acids from the C-terminal region of human FCRL3.

Dilution

WB~~1:1000

Format

Purified polyclonal antibody supplied in PBS with 0.09% (W/V) sodium azide. This antibody is purified through a protein A column, followed by peptide affinity purification.

Storage

Maintain refrigerated at 2-8°C for up to 2 weeks. For long term storage store at -20°C in small aliquots to prevent freeze-thaw cycles.

Precautions

FCRL3 Antibody (C-term) is for research use only and not for use in diagnostic or therapeutic procedures.

FCRL3 Antibody (C-term) - Protein Information**Name** FCRL3 ([HGNC:18506](#))

Function Promotes TLR9-induced B-cell proliferation, activation and survival but inhibits antibody production and suppresses plasma cell differentiation. Enhances activation of NF-kappa-B and MAPK signaling pathways in TLR9 stimulated B-cells (PubMed:[23857366](#)). Has inhibitory potential on B-cell receptor (BCR)-mediated signaling, possibly through association with SH2 domain-containing phosphatases. Inhibits cell tyrosine phosphorylation, calcium mobilization and activation- induced cell death induced through BCR signaling (PubMed:[19843936](#)). Regulatory T-cells expressing FCRL3 exhibit a memory phenotype, are relatively nonresponsive to antigenic stimulation in presence of IL2 and have reduced capacity to suppress the proliferation of effector T- cells (PubMed:[20190142](#), PubMed:[19494275](#)). Acts as a human-specific epitope on the cell surface of oocytes (oolemma) and plays a role during sperm-egg adhesion and fusion (PubMed:[36070373](#)). Interacts with the IZUMO1-IZUMO1R/JUNO sperm-egg complex and replaces IZUMO1R/JUNO as IZUMO1 receptor during fertilization, thereby permitting species- specific gamete fusion (PubMed:[36070373](#)).

Cellular Location

Cell membrane; Single-pass type I membrane protein. Cell projection, microvillus membrane.
Note=Localized along the oolemma microvilli of unfertilized oocytes

Tissue Location

Primarily expressed in secondary lymphoid tissues by mature subsets of B-cells. Low expression on transitional B cells which increases to higher surface expression on mature and memory B- cells with innate-like features (at protein level) (PubMed:23857366) Expressed a low levels in naive and germinal center B-cells but also expressed in NK cells (at protein level) (PubMed:20190142). Expressed in unfertilized oocytes (at protein level) (PubMed:36070373). Expressed in a population of thymically derived naturally occurring regulatory T- cells that exhibits a memory phenotype, specialized in suppressing immune response to self-antigens (PubMed:20190142). Detected in spleen, lymph node, peripheral blood lymphocytes, thymus, bone marrow, kidney, salivary gland, adrenal gland and uterus.

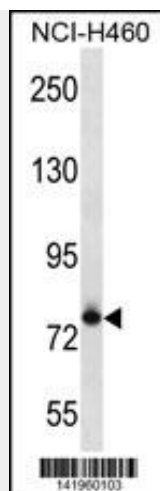
FCRL3 Antibody (C-term) - Protocols

Provided below are standard protocols that you may find useful for product applications.

- [Western Blot](#)
- [Blocking Peptides](#)
- [Dot Blot](#)
- [Immunohistochemistry](#)
- [Immunofluorescence](#)
- [Immunoprecipitation](#)
- [Flow Cytometry](#)
- [Cell Culture](#)

FCRL3 Antibody (C-term) - Images





FCRL3 Antibody (C-term) (Cat. #AP19988b) western blot analysis in NCI-H460 cell line lysates (35ug/lane). This demonstrates the FCRL3 antibody detected the FCRL3 protein (arrow).

FCRL3 Antibody (C-term) - Background

This gene encodes a member of the immunoglobulin receptor superfamily and is one of several Fc receptor-like glycoproteins clustered on the long arm of chromosome 1. The encoded protein contains immunoreceptor-tyrosine activation motifs and immunoreceptor-tyrosine inhibitory motifs in its cytoplasmic domain and may play a role in regulation of the immune system. Mutations in this gene have been associated with rheumatoid arthritis, autoimmune thyroid disease, and systemic lupus erythematosus.

FCRL3 Antibody (C-term) - References

Wu, H., et al. Hum. Immunol. (2010) In press :
Swainson, L.A., et al. J. Immunol. 184(7):3639-3647(2010)
Davila, S., et al. Genes Immun. 11(3):232-238(2010)
Zheng, R., et al. Zhonghua Yi Xue Yi Chuan Xue Za Zhi 26(6):681-685(2009)
Gibson, A.W., et al. Arthritis Rheum. 60(11):3510-3512(2009)