

**PVR Antibody (C-term)**  
**Affinity Purified Rabbit Polyclonal Antibody (Pab)**  
**Catalog # AP19996b**

**Specification**

---

**PVR Antibody (C-term) - Product Information**

Application	WB,E
Primary Accession	<a href="#">P15151</a>
Other Accession	<a href="#">NP_006496.3</a>
Reactivity	Human
Host	Rabbit
Clonality	Polyclonal
Isotype	Rabbit IgG
Antigen Region	314-342

**PVR Antibody (C-term) - Additional Information**

**Gene ID** 5817

**Other Names**

Poliovirus receptor, Nectin-like protein 5, NECL-5, CD155, PVR, PVS

**Target/Specificity**

This PVR antibody is generated from rabbits immunized with a KLH conjugated synthetic peptide between 314-342 amino acids from the C-terminal region of human PVR.

**Dilution**

WB~~1:1000

**Format**

Purified polyclonal antibody supplied in PBS with 0.09% (W/V) sodium azide. This antibody is purified through a protein A column, followed by peptide affinity purification.

**Storage**

Maintain refrigerated at 2-8°C for up to 2 weeks. For long term storage store at -20°C in small aliquots to prevent freeze-thaw cycles.

**Precautions**

PVR Antibody (C-term) is for research use only and not for use in diagnostic or therapeutic procedures.

**PVR Antibody (C-term) - Protein Information**

**Name** PVR

**Synonyms** PVS

**Function** Mediates NK cell adhesion and triggers NK cell effector functions. Binds two different NK

cell receptors: CD96 and CD226. These interactions accumulates at the cell-cell contact site, leading to the formation of a mature immunological synapse between NK cell and target cell. This may trigger adhesion and secretion of lytic granules and IFN-gamma and activate cytotoxicity of activated NK cells. May also promote NK cell-target cell modular exchange, and PVR transfer to the NK cell. This transfer is more important in some tumor cells expressing a lot of PVR, and may trigger fratricide NK cell activation, providing tumors with a mechanism of immunoevasion. Plays a role in mediating tumor cell invasion and migration.

#### Cellular Location

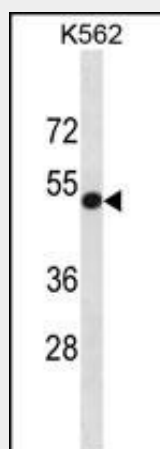
[Isoform Alpha]: Cell membrane; Single-pass type I membrane protein [Isoform Beta]: Secreted.

#### PVR Antibody (C-term) - Protocols

Provided below are standard protocols that you may find useful for product applications.

- [Western Blot](#)
- [Blocking Peptides](#)
- [Dot Blot](#)
- [Immunohistochemistry](#)
- [Immunofluorescence](#)
- [Immunoprecipitation](#)
- [Flow Cytometry](#)
- [Cell Culture](#)

#### PVR Antibody (C-term) - Images



PVR Antibody (C-term) (Cat. #AP19996b) western blot analysis in K562 cell line lysates (35ug/lane). This demonstrates the PVR antibody detected the PVR protein (arrow).

#### PVR Antibody (C-term) - Background

The protein encoded by this gene is a transmembrane glycoprotein belonging to the immunoglobulin superfamily. The external domain mediates cell attachment to the extracellular matrix molecule vitronectin, while its intracellular domain interacts with the dynein light chain Tctex-1/DYNLT1. The gene is specific to the primate lineage, and serves as a cellular receptor for poliovirus in the first step of poliovirus replication. Multiple transcript variants encoding different isoforms have been found for this gene.

**PVR Antibody (C-term) - References**

Nakai, R., et al. Cancer Sci. 101(5):1326-1330(2010)  
Jugessur, A., et al. PLoS ONE 5 (7), E11493 (2010) :  
Stanietsky, N., et al. Proc. Natl. Acad. Sci. U.S.A. 106(42):17858-17863(2009)  
Carlsten, M., et al. J. Immunol. 183(8):4921-4930(2009)  
Kindberg, E., et al. J. Med. Virol. 81(5):933-936(2009)