

CLCN5 Antibody (N-term)
Affinity Purified Rabbit Polyclonal Antibody (Pab)
Catalog # AP20002a**Specification**

CLCN5 Antibody (N-term) - Product Information

| | |
|-------------------|--|
| Application | WB,E |
| Primary Accession | P51795 |
| Other Accession | P51796 , Q9TTU3 , Q9GKE7 , Q9WVD4 , NP_000075.1 |
| Reactivity | Human |
| Predicted | Mouse, Pig, Rabbit, Rat |
| Host | Rabbit |
| Clonality | Polyclonal |
| Isotype | Rabbit IgG |
| Calculated MW | 90785 |
| Antigen Region | 15-41 |

CLCN5 Antibody (N-term) - Additional Information**Gene ID** 1184**Other Names**

H(+)/Cl(-) exchange transporter 5, Chloride channel protein 5, CLC-5, Chloride transporter CLC-5, CLCN5, CLCK2

Target/Specificity

This CLCN5 antibody is generated from rabbits immunized with a KLH conjugated synthetic peptide between 15-41 amino acids from the N-terminal region of human CLCN5.

Dilution

WB~~1:1000

Format

Purified polyclonal antibody supplied in PBS with 0.09% (W/V) sodium azide. This antibody is purified through a protein A column, followed by peptide affinity purification.

Storage

Maintain refrigerated at 2-8°C for up to 2 weeks. For long term storage store at -20°C in small aliquots to prevent freeze-thaw cycles.

Precautions

CLCN5 Antibody (N-term) is for research use only and not for use in diagnostic or therapeutic procedures.

CLCN5 Antibody (N-term) - Protein Information**Name** CLCN5 ([HGNC:2023](#))

Synonyms CLCK2

Function Proton-coupled chloride transporter. Functions as antiport system and exchanges chloride ions against protons (PubMed:[20466723](#)). Important for normal acidification of the endosome lumen. May play an important role in renal tubular function. The CLC channel family contains both chloride channels and proton-coupled anion transporters that exchange chloride or another anion for protons. The absence of conserved gating glutamate residues is typical for family members that function as channels (Probable).

Cellular Location

Golgi apparatus membrane; Multi-pass membrane protein. Endosome membrane; Multi-pass membrane protein. Cell membrane; Multi-pass membrane protein

Tissue Location

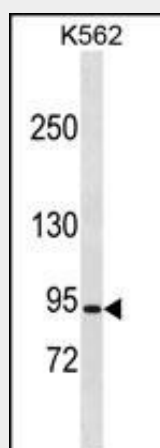
Kidney. Moderately expressed in aortic vascular smooth muscle and endothelial cells, and at a slightly higher level in the coronary vascular smooth muscle.

CLCN5 Antibody (N-term) - Protocols

Provided below are standard protocols that you may find useful for product applications.

- [Western Blot](#)
- [Blocking Peptides](#)
- [Dot Blot](#)
- [Immunohistochemistry](#)
- [Immunofluorescence](#)
- [Immunoprecipitation](#)
- [Flow Cytometry](#)
- [Cell Culture](#)

CLCN5 Antibody (N-term) - Images



CLCN5 Antibody (N-term) (Cat. #AP20002a) western blot analysis in K562 cell line lysates (35ug/lane). This demonstrates the CLCN5 antibody detected the CLCN5 protein (arrow).

CLCN5 Antibody (N-term) - Background

This gene encodes a member of the CIC family of chloride ion channels and ion transporters. Mutations in this gene have been found in Dent disease and renal tubular disorders complicated by

nephrolithiasis. Alternatively spliced transcript variants encoding different isoforms have been found for this gene. [provided by RefSeq].

CLCN5 Antibody (N-term) - References

Smith, A.J., et al. FASEB J. 24(10):3696-3705(2010)
Wellhauser, L., et al. Pflugers Arch. 460(2):543-557(2010)
Smith, A.J., et al. J. Physiol. (Lond.) 588 (PT 12), 2033-2045 (2010) :
Picollo, A., et al. J. Gen. Physiol. 135(6):653-659(2010)
Reed, A.A., et al. Am. J. Physiol. Renal Physiol. 298 (2), F365-F380 (2010) :