

**CALML6 Antibody (Center)**  
**Affinity Purified Rabbit Polyclonal Antibody (Pab)**  
**Catalog # AP20039c****Specification**

---

**CALML6 Antibody (Center) - Product Information**

Application	WB,E
Primary Accession	<a href="#">Q8TD86</a>
Other Accession	<a href="#">NP_619650.2</a>
Reactivity	Human
Host	Rabbit
Clonality	Polyclonal
Isotype	Rabbit IgG
Calculated MW	20690
Antigen Region	100-128

**CALML6 Antibody (Center) - Additional Information****Gene ID** 163688**Other Names**

Calmodulin-like protein 6, Calglandulin-like protein, CALML6, CAGLP, CALGP

**Target/Specificity**

This CALML6 antibody is generated from rabbits immunized with a KLH conjugated synthetic peptide between 100-128 amino acids from the Central region of human CALML6.

**Dilution**

WB~~1:1000

**Format**

Purified polyclonal antibody supplied in PBS with 0.09% (W/V) sodium azide. This antibody is purified through a protein A column, followed by peptide affinity purification.

**Storage**

Maintain refrigerated at 2-8°C for up to 2 weeks. For long term storage store at -20°C in small aliquots to prevent freeze-thaw cycles.

**Precautions**

CALML6 Antibody (Center) is for research use only and not for use in diagnostic or therapeutic procedures.

**CALML6 Antibody (Center) - Protein Information****Name** CALML6**Synonyms** CAGLP, CALGP

**Cellular Location**

Cytoplasm. Nucleus

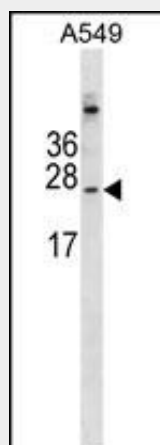
**Tissue Location**

Expressed in prostate, thymus, heart, skeleton muscle, bone marrow and ovary.

**CALML6 Antibody (Center) - Protocols**

Provided below are standard protocols that you may find useful for product applications.

- [Western Blot](#)
- [Blocking Peptides](#)
- [Dot Blot](#)
- [Immunohistochemistry](#)
- [Immunofluorescence](#)
- [Immunoprecipitation](#)
- [Flow Cytometry](#)
- [Cell Culture](#)

**CALML6 Antibody (Center) - Images**

CALML6 Antibody (Center) (Cat. #AP20039c) western blot analysis in A549 cell line lysates (35ug/lane). This demonstrates the CALML6 antibody detected the CALML6 protein (arrow).

**CALML6 Antibody (Center) - Background**

The function of this protein is unknown.

**CALML6 Antibody (Center) - References**

Chen, S., et al. DNA Seq. 15 (5-6), 365-368 (2004) :