

PDE8B Antibody (Center)
Affinity Purified Rabbit Polyclonal Antibody (Pab)
Catalog # AP20045c

Specification

PDE8B Antibody (Center) - Product Information

Application	WB,E
Primary Accession	O95263
Other Accession	E9Q4S1 , NP_003710.1
Reactivity	Mouse
Host	Rabbit
Clonality	Polyclonal
Isotype	Rabbit IgG
Calculated MW	98979
Antigen Region	296-324

PDE8B Antibody (Center) - Additional Information

Gene ID 8622

Other Names

High affinity cAMP-specific and IBMX-insensitive 3', 5'-cyclic phosphodiesterase 8B, HsPDE8B, Cell proliferation-inducing gene 22 protein, PDE8B

Target/Specificity

This PDE8B antibody is generated from rabbits immunized with a KLH conjugated synthetic peptide between 296-324 amino acids from the Central region of human PDE8B.

Dilution

WB~~1:1000

Format

Purified polyclonal antibody supplied in PBS with 0.09% (W/V) sodium azide. This antibody is purified through a protein A column, followed by peptide affinity purification.

Storage

Maintain refrigerated at 2-8°C for up to 2 weeks. For long term storage store at -20°C in small aliquots to prevent freeze-thaw cycles.

Precautions

PDE8B Antibody (Center) is for research use only and not for use in diagnostic or therapeutic procedures.

PDE8B Antibody (Center) - Protein Information

Name PDE8B

Function Hydrolyzes the second messenger cAMP, which is a key regulator of many important

physiological processes. May be involved in specific signaling in the thyroid gland.

Tissue Location

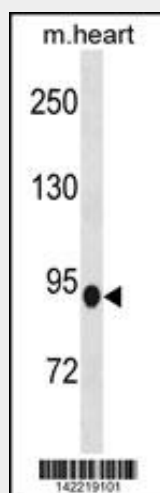
Abundantly expressed in the thyroid. Also very weakly expressed in brain, spinal cord and placenta. In the thyroid isoform 1 predominates, and isoforms 2 and 6 are also highly expressed. In the placenta isoforms 1 and 2 are expressed equally. In the brain isoform 2 predominates.

PDE8B Antibody (Center) - Protocols

Provided below are standard protocols that you may find useful for product applications.

- [Western Blot](#)
- [Blocking Peptides](#)
- [Dot Blot](#)
- [Immunohistochemistry](#)
- [Immunofluorescence](#)
- [Immunoprecipitation](#)
- [Flow Cytometry](#)
- [Cell Culture](#)

PDE8B Antibody (Center) - Images



PDE8B Antibody (Center) (Cat. #AP20045c) western blot analysis in mouse heart tissue lysates (35ug/lane). This demonstrates the PDE8B antibody detected the PDE8B protein (arrow).

PDE8B Antibody (Center) - Background

The protein encoded by this gene is a cyclic nucleotide phosphodiesterase (PDE) that catalyzes the hydrolysis of the second messenger cAMP. The encoded protein, which does not hydrolyze cGMP, is resistant to several PDE inhibitors. Defects in this gene are a cause of autosomal dominant striatal degeneration (ADSD). Several transcript variants encoding different isoforms have been found for this gene.

PDE8B Antibody (Center) - References

Horvath, A., et al. Thyroid 20(4):363-367(2010)

Rose, J. Phd, et al. Mol. Med. (2010) In press :
Appenzeller, S., et al. Am. J. Hum. Genet. 86(1):83-87(2010)
Shields, B.M., et al. J. Clin. Endocrinol. Metab. 94(11):4608-4612(2009)
Bimpaki, E.I., et al. Eur. J. Endocrinol. 161(1):153-161(2009)